

# Disability Inclusion Action Plan 2023–2026



City of  
**STONNINGTON**



Easy English



## Hard words



This book has some hard words.

The first time we write a hard word

- the word is in **blue**
  
- we write what the hard word means.

## You can get help with this book



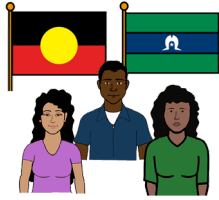
You can get someone to help you

- read this book
  
- know what this book is about
  
- find more information.



We will write contact information at the end of this book.

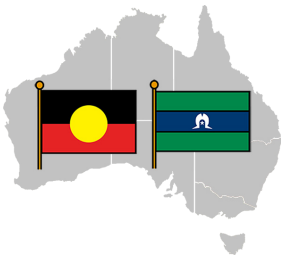
# We acknowledge First Nations people



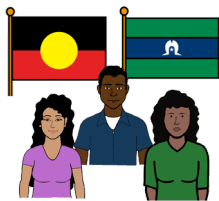
**Acknowledge** means we understand the importance of **First Nations people's**

- culture

- language



- history.



First Nations people are the Aboriginal and Torres Strait Islander people.

In the City of Stonnington the First Nations people are called

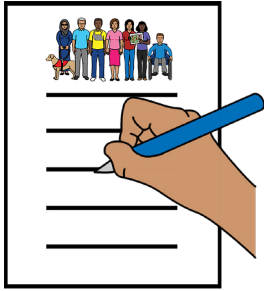
- the Wurundjeri Woi Wurrung

- the Bunurong.

# About this book



This book is from the City of Stonnington.

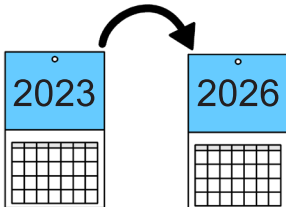


This book is about our Disability Inclusion Action Plan.

We call it **the plan**.



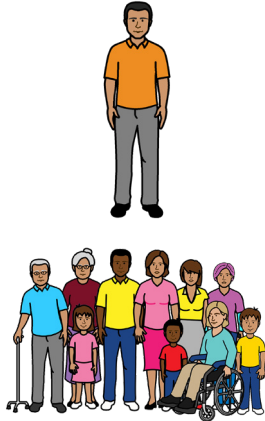
The plan says how we will support people with disability in the City of Stonnington.



The plan is from 2023 to 2026.

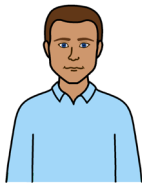
## Our community

We want to support everyone with disability. This includes



- people with disability you **cannot** see
- people of all ages and cultures.

We want to support people of different **genders**.

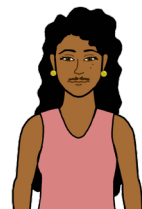


Gender means if you are

- a man



- a woman



- both a man and a woman
- **not** a man or a woman.

We also want to support people with disability who have a different



- religion

- **sexuality.**



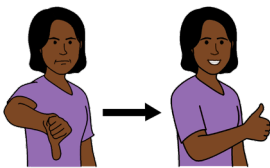
Sexuality means who you are attracted to.

## How we made the plan



To make the plan we asked the community

- what we do well for people with disability

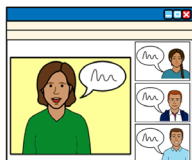


- what we can do better for people with disability.



We spoke to the community

- in person



- online.

## We will help the community understand disability



We will make sure our staff

- know about disability



- know how they can support people with disability to be part of the community.



We will share good stories about disability.

We will ask people with disability to tell us

- what we can do better



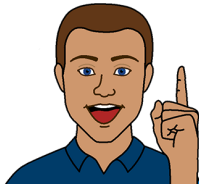
- how we can support them.

## We will be more inclusive



**Inclusive** means everyone

- can be part of something
- feels important.



We will make sure that everyone can be part of our events.



For example Carols by Candlelight.

We will make sure that everyone can be part of our programs.



For example computer lessons at the library.



We will also **advocate** for people with disability to get supports they need.



Advocate is when you speak up about things that are important to a group of people.

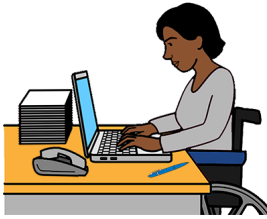


For example we will advocate for people with disability to have better

- houses
- public transport.

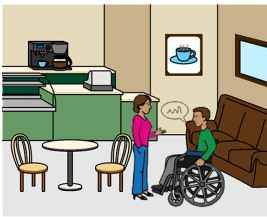


## We will help people with disability get jobs



We will make jobs for people with disability.

We will make our workplaces more accessible.



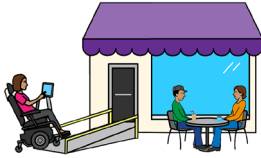
For example we will make sure staff with disability can take breaks if they need to.



We will ask people with disability to be in charge of projects for us.

We will teach our staff about disability.

## We will be accessible



**Accessible** means places are easy for everyone to go to and use.



Places we will make more accessible include

- bathrooms



- footpaths



- playgrounds.

We will tell everyone how our buildings are accessible.



For example we will tell people where to find accessible toilets.

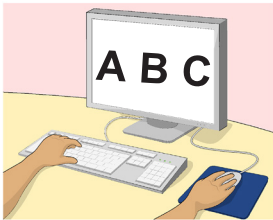


Accessible also means that everyone

- can understand our information
- can get our information in different ways.



We will make our website more accessible.

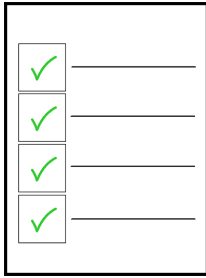


For example we will use big writing on our website that is easy to see.



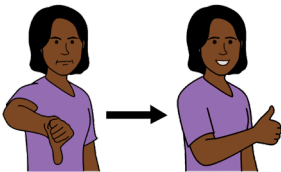
We will also share information in different languages.

## We will do what we say in the plan

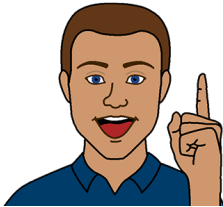


We will

- check if we reach our goals



- change our plan to get better.



We will also write a report to tell you what we have done.



## More information



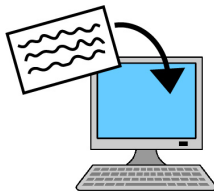
For more information contact the  
City of Stonnington.



Call            8290 1333



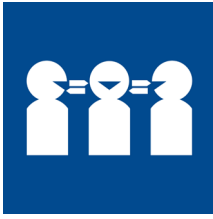
Website    [stonnington.vic.gov.au/Home](http://stonnington.vic.gov.au/Home)



Email  
[access@stonnington.vic.gov.au](mailto:access@stonnington.vic.gov.au)

**You can read the full Disability Inclusion  
Action Plan on our website.**

Website  
[connectstonnington.vic.gov.au/access](http://connectstonnington.vic.gov.au/access)



### **If you do not speak English**

Use the free Translating and Interpreting Service or TIS.



Call            131 450

Give the TIS officer the phone number you want to call.



### **If you need help to speak or listen**

The National Relay Service can help you make a phone call.



Call            1800 555 660



Website    [accesshub.gov.au/nrs-helpdesk](http://accesshub.gov.au/nrs-helpdesk)

Give the relay officer the phone number you want to call.

This Easy English document was created by Scope (Aust) Ltd. in September 2023 using Picture Communication Symbols (PCS). PCS is a trademark of Tobii Dynavox, LLC. All rights reserved. Used with permission. This document must not be sold to third parties. The images must not be reused without permission. For more information about the images, contact Scope on 1300 472 673 or visit [scopeaust.org.au](https://scopeaust.org.au)

