



The State of Victoria does not warrant the accuracy or completeness of information in this publication and any person using or relying upon such information does so on the basis that the State of Victoria shall bear no responsibility or liability whatsoever for any errors, faults, defects or omissions in the information.

No Guarantee or warranty is given as to the accuracy or completeness of the details shown on this map. The City of Stonnington shall not be liable in any way for loss of any kind including, damages, costs, interest, loss of profits arising from error, inaccuracy, incompleteness of this information.



1146/21 – Shop 15-16/1 Grange Road, Toorak

★ = objection

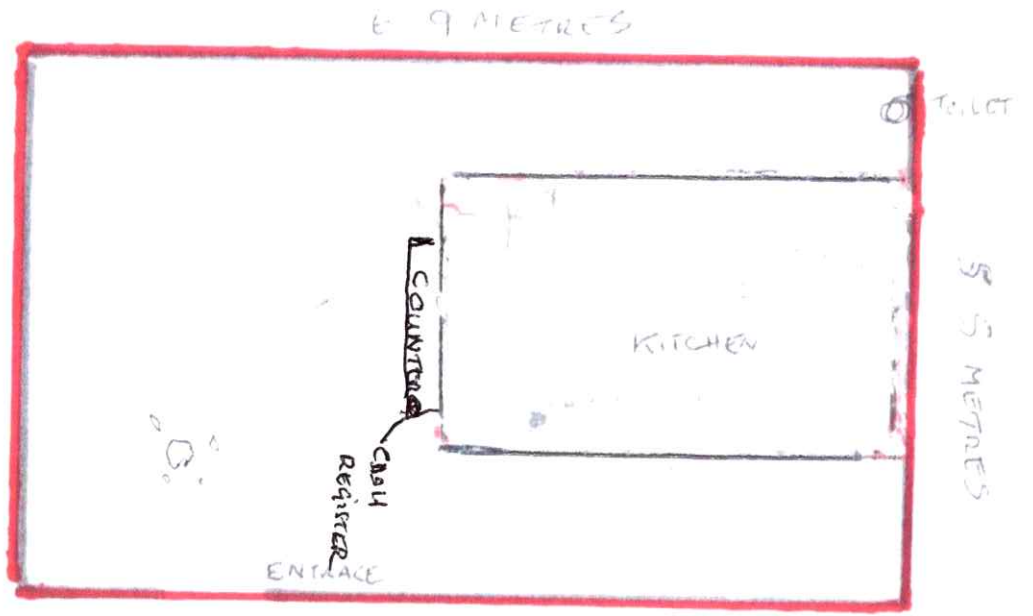
Date printed: 4/01/2023

Scale: 1:1308

SAN LORENZO PIZZERIA & DOLCERIA
SHOP 15/16, 1 CRANGE ROAD
TOORAK



CAR PARK
AREA



CRANGE ROAD

Received by City of Stonnington on 14/09/2022. Any document provided is made available for the sole purpose of enabling its consideration and review as part of a planning process under the Planning and Environment Act 1987. This information must not be used for any purpose which may breach any copyright.