

MSSB-2 with existing Innotech and Siemens Controllers

- MSSB -1
- Pool FSB-1

- Pool FSB-2
- Alerton DDC

- Pool FSB-3
- MCC-1 & Alerton DDC

- Alerton DDC Board

- MSB -submeters

DRAWING NOTES:

- 1 REMOVE EXISTING INCOMING SUPPLY EXACT LOCATION OF UNDERGROUND CABLE IS NOT KNOWN CONFIRM ON SITE. CO-ORDINATE REMOVAL OF SUPPLY TO SUIT THE STAGING OF THE PROJECT.
- 2 LEVEL 1 SLAB IS TO BE DEMOLISHED. ALLOW TO REMOVE ALL EXISTING ELECTRICAL SERVICES TO ALLOW DEMOLITION. ALLOW ALSO FOR TEMPORARY RELOCATION OF ALL POWER SUPPLIES INCLUDE MAINS SUPPLY TO ALLOW DEMOLITION TO OCCUR. SWITCHBOARDS ARE TO REMAIN OPERATIONAL DURING WORKS. PROVIDE PROTECTION AS REQUIRED.
- 3 PROVIDE POWER SUPPLY TO MOTORISED DOORS. COORDINATE FINAL LOCATION AND POWER REQUIREMENTS WITH DOOR SUPPLIER PRIOR TO INSTALLATION.
- 4 PROVIDE ISOLATOR IN CEILING SPACE FOR SAUNA ROOM POWER CONNECTION. LOCATION OF CONNECTION LIAISE WITH THE SAUNA ROOM CONTRACTOR ON SITE.
- 5 PROVIDE 4 PAIR CAT. 6 DATA CABLE AND 1 x FIGURE 8 FLEX FROM SAUNA TO SAUNA MASTER CONTROLLER. CONFIRM LOCATION OF CONTROLLER WITH CONTRACTOR PRIOR TO INSTALLATION.
- 6 PROVIDE STAFF CALL SYSTEM GENERALLY COMPRISING CALL PUSH BUTTON AND ALARM ANNUNCIATOR AT THE RECEPTION. SYSTEM SHALL BE IN ACCORDANCE WITH THE RELEVANT REQUIREMENTS OF AS 3811. STAFF CALL 650AFL AND 675mm FROM CEILING WALL BESIDE THE ACCESSIBLE TOILET PAN IN DISABLE TOILET ROOM. STAFF CALL 650AFL AND 600mm FROM SHOWERS HEAD WALL IN DISABLE CHANGE ROOM.
- 7 COMMERCIAL KITCHEN EQUIPMENT. LOCATIONS OF EQUIPMENT'S POWER SUPPLY ARE INDICATIVE. REFER DB SCHEDULE FOR DETAILS. CONFIRM EQUIPMENT DETAILS WITH KITCHEN/SERVERY ROOM LAYOUT.
- 8 PROVIDE DATA/VOICE AND POWER OUTLET FOR PUBLIC PHONE. CONFIRM FINAL LOCATION PRIOR TO INSTALLATION.
- 9 PROVIDE DATA AND POWER CONDUITS FROM ACCESSIBLE CEILING SPACE TO SKirting DUCT.
- 10 PROVIDE UNDER-BENCH 2 CHANNEL 150 x 50 SKIRTING DUCT. CONFIRM FINAL LOCATION AND DETAILS WITH ARCHITECT PRIOR TO INSTALLATION. ALLOW FOR COLOUR TO ARCHITECTS SELECTION.
- 11 CABLE TRAY SIZE AND LOCATION ARE INDICATIVE ONLY. COORDINATE FINAL LOCATION ON SITE. SIZE CABLE TRAY TO SUIT SUPPORTED CABLES WITH AN ADDITIONAL 30% SPACE FOR FUTURE CABLING. PROVIDE ALSO ACCESS HATCHES TO CABLE TRAY WHERE LOCATED IN CONCEALED SPACES.
- 12 POWER OUTLET FOR DRINKING FOUNTAIN. COORDINATE LOCATION WITH FOUNTAIN INSTALLER.
- 13 CONTINUE ON SITE PLAN E002, REFER TO SITE PLAN FOR LOCATION OF DB-3.
- 14 PROVIDE 32mm DIA CONDUIT FOR FUTURE SIGNAGE. CAP END OF CONDUITS. WIRING TERMINATING IN THE ADJACENT GARDEN BED TO FACILITATE A LATER INSTALLATION.
- 15 POWER SUPPLY FOR FUTURE MOTORISED DOOR. LOCATE IN WALL BEHIND BLANK PLATE.
- 16 NOTE DELETED.
- 17 PROVIDE EQUIPMENTAL EARTH BONDING (60mm² EARTH) IN ACCORDANCE WITH AS 3000 FOR ALL EXPOSED METAL IN POOL AREA INCLUDING HAND RAILS, LADDERS AND LANE ROPE ANCHORS. REFER POOL CONSULTANT DRAWINGS FOR LOCATIONS.
- 18 ALLOW TO RELOCATE AND REWIRE EXISTING SECURITY CAMERAS TO THE RELOCATED CCTV HEAD END EQUIPMENT IN ROOM ADJACENT MAIN SWITCHROOM.
- 19 CO-ORDINATE WITH GULDMANN CEILING TRACK AND HOST SYSTEM SUPPLIER. CONFIRM FINAL LOCATION OF GPO'S PRIOR TO INSTALLATION.
- 20 EXISTING TO REMAIN ALLOW TO RE-CIRCUIT TO NEW SWITCHBOARDS.
- 21 CO-ORDINATE WITH HYDRAULICS CONTRACTOR THROUGH THIS AREA.
- 22 POWER OUTLET FOR FUTURE BAIN MARIE.
- 23 POWER OUTLETS SUSPENDED FROM CEILING AT 800mm AFFL.
- 24 PROVIDE SWITCHING AND CONNECTION TO KITCHEN EXHAUST VIA JUNCTION BOX ON TOP OF CANOPY. COORDINATE LOCATION OF FANS WITH MECHANICAL SERVICES CONTRACTOR.

Rev	Description	Checked	Date
A	TENDER ISSUE		22.04.08
B	CONSTRUCTION		24.01.09
C	KITCHEN POWER LAYOUT REVISED		19.03.10

15.09.09 XIG-ARC

Architect
PEDDLERHORPARCHITECTS
 Level 2B, 140 William Street
 Melbourne Victoria Australia 3000
 Tel: 61 03 9923 2222 Fax: 61 03 9670 4981
 Email: info@peddler.com.au http://www.peds.com.au
 ACN: 006 975 668

Waterman International
 Consulting Engineers
 Waterman AHW (Vic) Pty Ltd
 ACN 121 003 334 ABN 45 121 003 334
 60 Park Street, South Melbourne, Victoria 3205 Australia
 t: 03 9685 9900 f: 03 9685 9999 e: water@watervic.com.au

Project
HAROLD HOLT MEMORIAL SWIMMING CENTRE REDEVELOPMENT
 HIGH STREET, GLEN IRIS

Title
ELECTRICAL SERVICES
GROUND LEVEL
POWER & COMMS LAYOUT PLAN

Drawn	Date	Checked	Scale	Job No
	JUNE 2010		1:10 @ A0	4164
Drawn No		Revision		
E102		C		

Date: 23/02/2010 Scale: 1:25 Plot by: djf@peddler.com.au

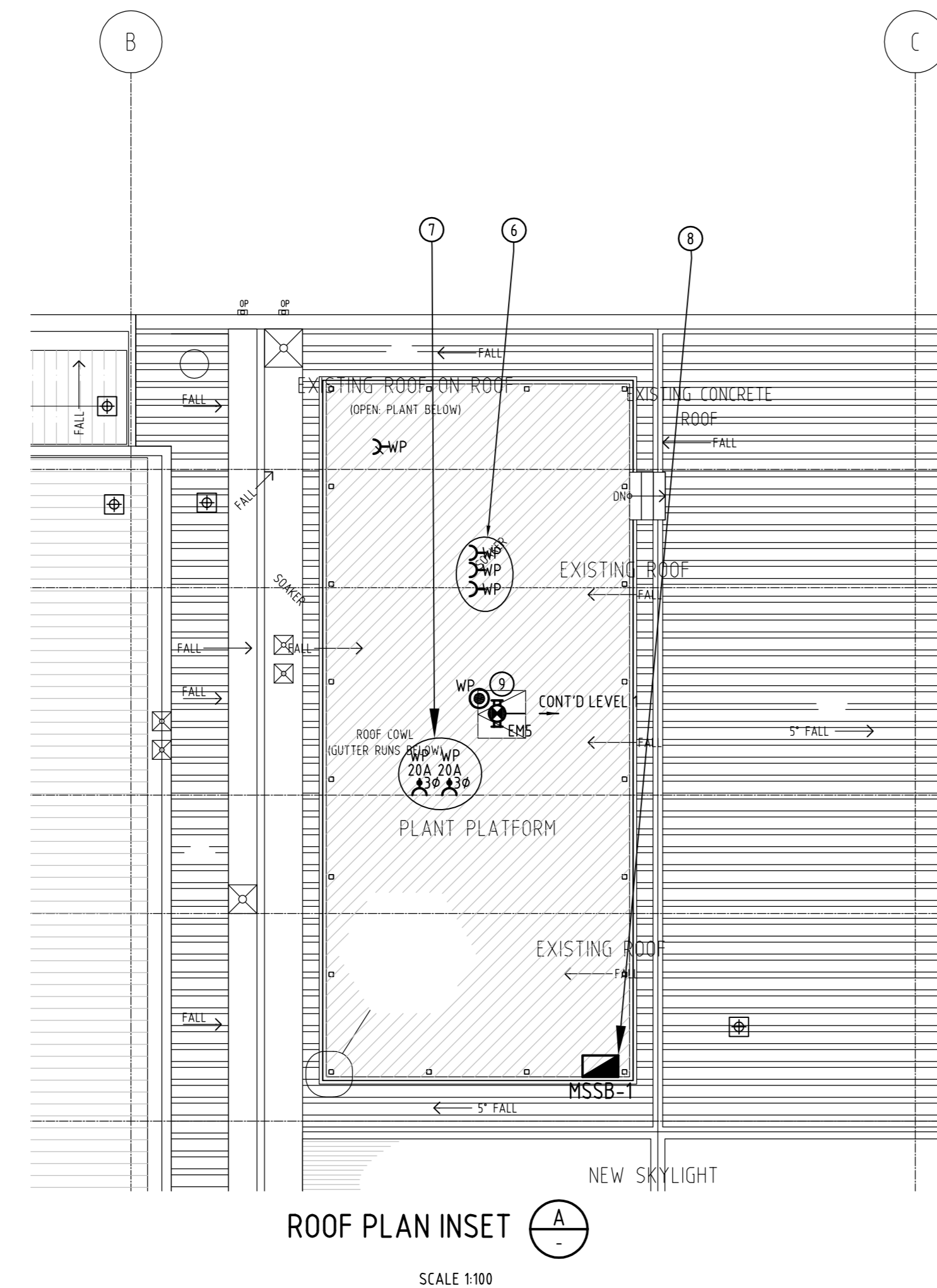
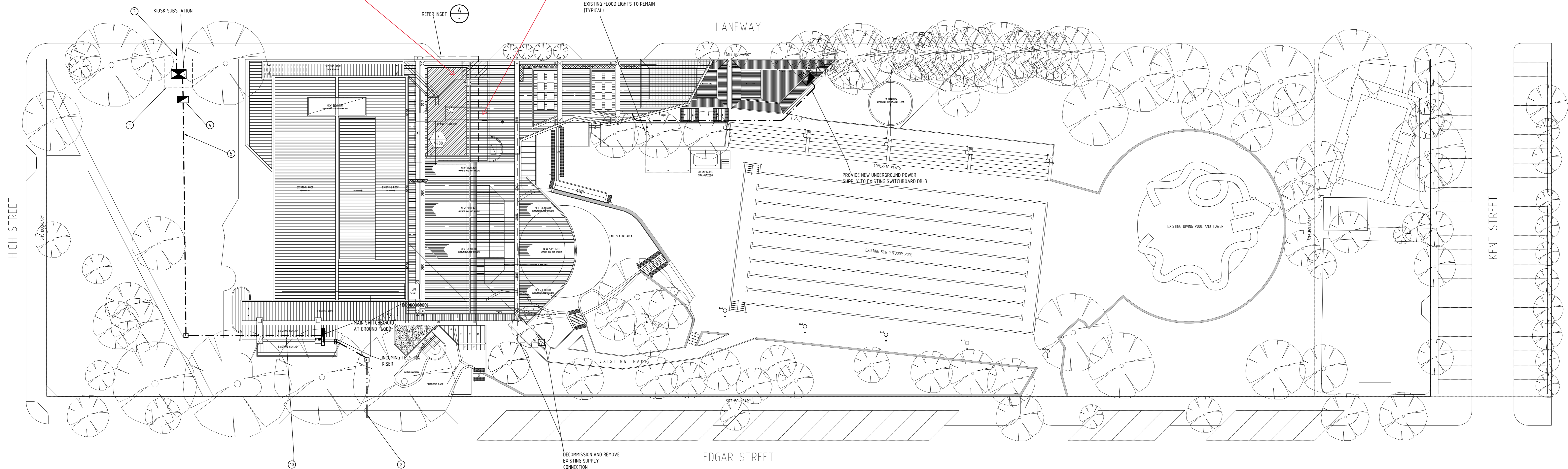
CONSTRUCTION

DRAWING NOTES:

- ① NEW MDSK SUBSTATION. COMPLY WITH ELECTRICITY DISTRIBUTION COMPANY ALINTA SPECIFICATION FOR THE INSTALLATION OF THE CUSTOMER PROVISION FOR THE MDSK SUBSTATION. LIAISE WITH ALINTA FOR DETAILS OF CONSUMERS MAINS TERMINATION TO SUBSTATION LV. ALLOW EASEMENT FOR 4.7 x 4.7m.
- ② PROVIDE 125mm DIAMETER WHITE CONDUIT TELSTRA INCOMING
- ③ INCOMING H.V. CABLE ROUTE IS INDICATIVE ALLOW FOR 2 x 125 DIA CONDUITS. LIAISE WITH ELECTRICITY DISTRIBUTION COMPANY (ALINTA) PROVIDE CONDUITS AND CABLE ACCESS IN ACCORDANCE WITH ALINTA SPECIFICATION. NOTE THAT THE CONDUIT ARE TO BE INSTALLED IN ACCORDANCE WITH THE DOCUMENTATION FROM ALINTA.
- ④ SUPPLY DISCONNECTION CUBICLE CO-ORDINATE WITH ALINTA FOR SERVICE PROTECTION DEVICE REQUIREMENTS.
- ⑤ PROVIDE 2 No 100 DIA HDPE CONDUITS FROM ELECTRICAL CUBICLE TO MAIN SWITCHROOM PROVIDE CABLE PULLING PITS TO SUIT
- ⑥ DOMESTIC HOT WATER IGNITION POWER. COORDINATE FINAL LOCATION WITH HYDRAULIC CONTRACTOR PRIOR TO INSTALLATION.
- ⑦ RECIRCULATING PUMPS COORDINATE FINAL LOCATION WITH HYDRAULIC CONTRACTOR PRIOR TO INSTALLATION.
- ⑧ MECHANICAL SERVICES SWITCH BOARD. COORDINATE FINAL LOCATION WITH MECHANICAL CONTRACTOR PRIOR TO INSTALLATION.
- ⑨ CO-ORDINATE EMERGENCY LIGHT AND LIGHT SWITCH LOCATION ON SITE LOCATED WITH STAIR AND ROOF.
- ⑩ INSTALL CONDUIT THROUGH APERTURES UNDER NEW FLOOR SLAB.

MSSB-R.1
- MSSB- roof boiler
- Alerton DDC Board

Lighting DB-1-1
(on 1/F)



Rev	Description	Checked	Date
A	TENDER ISSUE		22.08.08
B	MAINS CABLE RELOCATED		29.09.08
C	CONSTRUCTION		24.02.09

Architect
PEDDLETHORPARCHITECTS
Level 2B, 140 William Street
Melbourne Victoria Australia 3000
Tel: 61 03 9923 2222 Fax: 61 03 9670 4981
Email: info@peds.com.au http://www.peds.com.au
ACN: 006 975 668

Waterman International
Consulting Engineers
Waterman AHW (Vic) Pty Ltd
ACN 121 603 334 ABN 45 121 603 334
60 Park Street, South Melbourne, Victoria 3205 Australia
t: 03 9685 9900 f: 03 9685 9999 e: waw@waterman.com.au

Project
HAROLD HOLT MEMORIAL SWIMMING
CENTRE REDEVELOPMENT
HIGH STREET, GLEN IRIS

Title
ELECTRICAL SERVICES
SITE PLAN & PART ROOF PLAN

Drawn	HH	Date	AUGUST 2008
Checked		Scale	1:50 @ A0
		Job No	4144
Drawing No	E002	Revision	C

CONSTRUCTION