



PRAHRAN SKATEPARK

FINAL CONCEPT DESIGN REPORT

CITY OF STONNINGTON

06 JUNE 2022

CONVIC

PREPARED BY

CONVIC

FOR



QUALITY INFORMATION

PROJECT NAME Prahran Skatepark
PROJECT NO. 19080
PREPARED BY Andrea Colombo
REVIEWED BY Bryce Hinton

ACKNOWLEDGEMENTS



CONVIC Pty Ltd. Acknowledge the contributions of all those who participated in the online pre-design consultation of the Prahran Skatepark, including the City of Stonnington staff and residents, community groups and other stakeholders who responded to the various opportunities for input and/or who provided advice and information where required.

CONTENTS

PAGE

01	INTRODUCTION	03
02	CONSULTATION SUMMARY	04
03	SITE CONTEXT	05
04	BACKGROUND INFORMATION	09
05	CONSULTATION FEEDBACK	11
06	CONCEPT DESIGN	16
07	3D RENDERS	20
08	PALETTES	28
19	NEXT STEPS	30

REVISION HISTORY

REVISION	REVISION DATE	DETAILS	AUTHORISED	
			NAME / POSITION	SIGNATURE
A	11.05.2022	FINAL CONCEPT DESIGN REPORT	BRYCE HINTON / DESIGN MANAGER	
B	06.06.2022	FINAL CONCEPT DESIGN REPORT	BRYCE HINTON / DESIGN MANAGER	

© CONVIC Pty Ltd. All rights reserved.

CONVIC has prepared this document for the sole use of the Client and for a specific purpose, each as expressly stated in the document. No other party should rely on this document without the prior written consent of CONVIC. CONVIC undertakes no duty, nor accepts any responsibility, to any third party who may rely upon or use this document. This document has been prepared based on the Client's description of its requirements and CONVIC's experience, having regard to assumptions that CONVIC can reasonably be expected to make in accordance with sound professional principles. CONVIC may also have relied upon information provided by the Client and other third parties to prepare this document, some of which may not have been verified. Subject to the above conditions, this document may be transmitted, reproduced or disseminated only in its entirety.

01

INTRODUCTION AND VISION

BACKGROUND

The City of Stonnington are proposing a new district to regional scale skate space within the development of the Princes Gardens Master Plan. This will build on and develop the much loved existing Prahran skatepark for the existing and growing youth population and the wider Melbourne community.

The facility shall compliment the existing uses and future recreational facilities proposed as part of the Princes Gardens Master Plan. By utilising a holistic approach the design of the Prahran skatepark will result in an activated central community hub that offers recreational and social experiences for all members of the community within a dynamic urban setting.

The Prahran skatepark aims to be a district to regional level facility catering to the needs of young people of Stonnington, and be part of the broader network of skateparks/informal youth recreation facilities available in the wider Melbourne region.

The following report explains the approach and principles utilised to create a comprehensive design response. It outlines the development of the design process and how it responds to council and community feedback.

The design explores opportunities and possibilities for the holistic integration of an urban skate space with landscape amenity, increased youth activation, supporting infrastructure, circulation and access.



VISION | To create a state of the art inner City skate plaza that pays homage to the much loved heritage of the Prahran skatepark. A vibrant urban sanctuary for the youth, reflected through materiality and cultural interpretation.

02

FIRST CONSULTATION SUMMARY

FIRST CONSULTATION

In September 2020 the City of Stonnington ran a community consultation with two key objectives:

- 1. INFORM THE COMMUNITY OF POTENTIAL DEVELOPMENT OF THE AQUATIC CENTRE AND SKATEPARK PRECINCT.**
- 2. TO FIND OUT COMMUNITY FEEDBACK AND FEELINGS TOWARDS THE EXISTING SKATEPARK**

The community consultation outcomes have been summarised to inform a community driven design brief for the Prahran Skatepark draft concept design. The information was collected from over 300 respondents through questionnaires, stake holder engagement, as well as conversations had with users have informed this brief. These are all outlined thematically and have been used as the foundation for the bespoke development of the draft concept design.

TARGET USER GROUP

The consultation feedback has highlighted skateboarders as the majority users. It will, however cater to all active wheeled sports including: BMX, roller skaters, scooters and all passive and active spectators.

SKILL LEVEL PROVISION

The majority of users were of intermediate and advanced level. The skate park design will reflect this user skill level, however, it is important to provide a facility that welcomes and provides opportunities for beginners and future generation of users. Diverse features that can be utilised by beginners, intermediate and advanced riders will be included encouraging natural progression of skills, as well as continual user challenge and skill development.

EXISTING SKATE AREAS + MOST IMPORTANT SKATE STYLE

The community consultation showed users favoured the street area most within the existing facility, followed by the mini ramp then the vert. With regard to skate style; street and plaza showed the strongest response with flowy street and flowy transition also highly favoured. With such a large community response all styles of skate were shown as somewhat important, therefore the facility design will respond to community feedback, offering a variety of features that cater to all styles of skate with a priority on street and plaza.

WHAT WOULD YOU CHANGE ABOUT THE EXISTING PARK

The majority of users stated that they believe the existing park should not be changed or if it is it would be better to extend rather than demolish the existing facility. Some other key comments centred around making the facility bigger, with a larger street section, removing the existing five stair and creating a plaza that has more variety with different height and style rails, ledges, manual pads but overall more space. Another key comment was to avoid collisions at busier times of use.

A wide variety of materials and creative features should be considered to ensure a unique experience and to continue to push and encourage riders to progress their skill levels across all styles of skating.

USER + SPECTATOR AMENITIES

To ensure a central community space that can be used by a variety of different user groups, the facility will offer a number of social opportunities. The provision of areas of refuge and shade throughout the day is to be considered and allowed for within the design. Lighting, drinking fountains, art installations, BBQ facilities and bins were also considered as important amenities for both skatepark users and spectators.

03

SITE CONTEXT

PRINCES GARDENS MASTER PLAN

The Prahran skatepark is a key component of the Princes Gardens Master Plan adopted by the City of Stonnington Council in July 2018.

It is important that the design of this youth space considers and integrates with all elements proposed in the master plan. The master plan will be implemented in stages and includes park improvements such as developing a main north south avenue, creating a formalised 'Chapel Forecourt' and developing the tennis precinct and aquatic centre. The main objectives of the Master Plan are to:

- Create a place where people will feel comfortable relaxing, exercising and socialising with others.
- Make Princes Gardens a safe, accessible and attractive place.
- Ensure that the facilities within Princes Gardens are of a high quality and meet the needs of the current and future local community.

For more information refer to the Princess Gardens Masterplan document.



SITE

The existing skatepark site is located a two minute walk from the vibrant commercial and retail spine of Chapel Street. Princess Gardens forms an important green open space and recreation reprieve within the Prahran Urban realm. It is easily accessible via public transport with Tram Stops on Malvern Road and Chapel Street as well as nearby bus and train stops.

The site is bordered to the north by the busy Malvern road, with public housing estates to the North and East. The Aquatic Centre which is also undergoing development forms the Southern extent of the site. There is a key north south pedestrian linkage that connects Malvern road to Princes Close to the South of the site.

Surrounded by various pedestrian linkages, active and passive recreation, public and urban realm; the skatepark is one component of a complex network of overlaid layered cultural and landscape elements that will require careful design consideration.

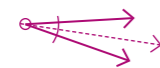
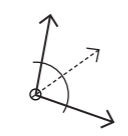



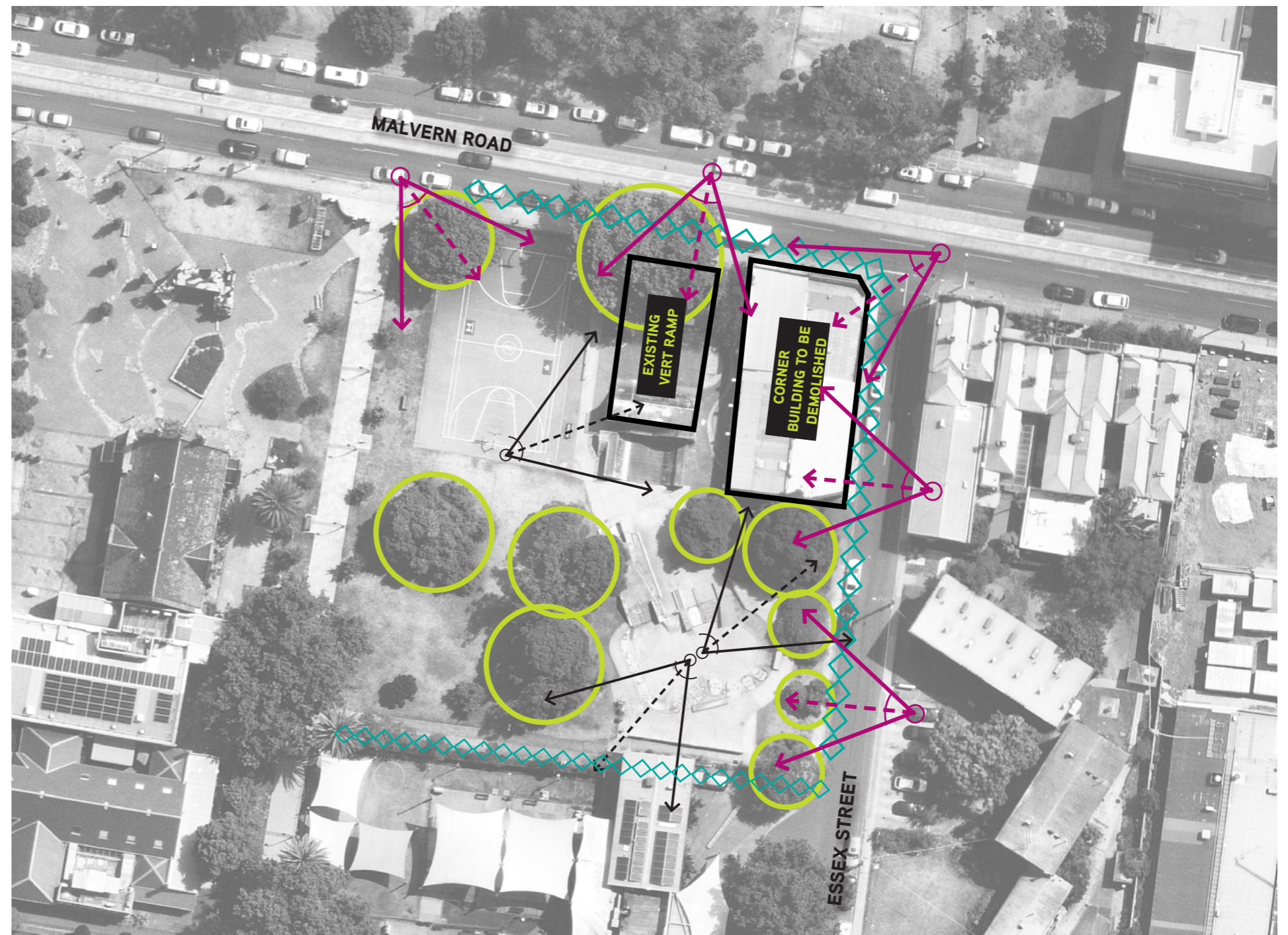
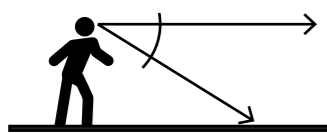
VISUAL CONNECTIONS + CPTED PRINCIPLES

It is essential for the design of any youth facility to allow for and encourage clear views into, across, from and through the site. This promotes passive and natural surveillance for the space and discourages anti-social behaviour.

With the combination of the existing building on the north east corner, the 3.5M High vert ramp structure and the distance of the basketball court - key views into the space from Malvern Road are blocked creating extremely poor passive and natural surveillance into the space. There is also very limited views from Essex Street due to trees and low shrub planting meaning the youth space is visually cut off from the surrounding streets. There are poor views out of the space which can make users feel unsafe and many walls and vegetated areas for hiding behind creating spaces for potential anti social behaviour.

VISUAL CONNECTIONS

-  EXTERNAL VIEWS
-  INTERNAL VIEWS
-  INACTIVE EDGES



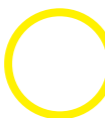


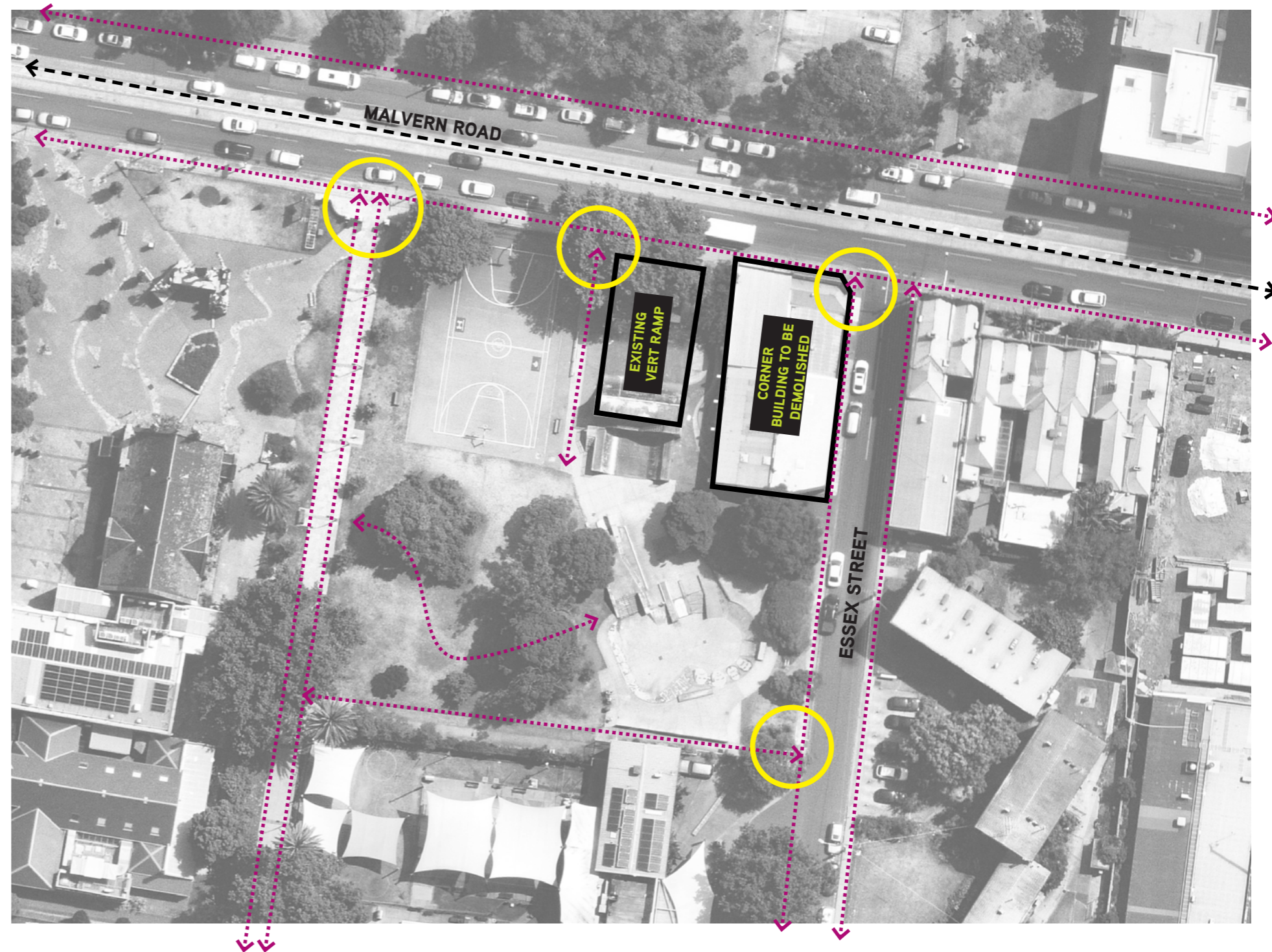
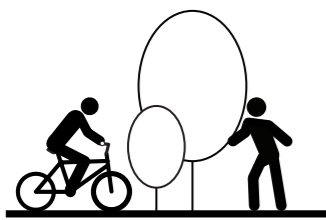
CIRCULATION AND ACCESS

The site is highly accessible from public transport with the nearby Surrey Road Tram stop to the east and the Malvern Road stop to the West. The new north south pedestrian axis will run up the middle of Princes Gardens, activating a central pedestrian spine.

There are key access nodes on three corners of the site that should remain open and physically / visually accessible to encourage site lines across the proposed facility.

SITE FEATURES

-  PEDESTRIAN
-  VEHICLE + TRAM LINE
-  ENTRY NODES



04

BACKGROUND INFORMATION SURROUNDING SKATE PARK CONTEXT

SURROUNDING SKATE PARK CONTEXT

Reviewing existing skate park facilities in the surrounding region helps develop the typology of style and obstacles that should be provided in the proposed facility. This review not only identifies possible gaps in provision within the local skatepark network, it also highlights what provision is already available. It is important to minimise the doubling up of available infrastructure which will create a facility unique to the region.

There are many existing skatepark facilities within and surrounding the City of Stonnington municipality however, a number of them are of poor condition and functionality. The following map highlights the key facilities within the region of relevance and as such have been considered within the surrounding skate park context analysis study.



BACKGROUND INFORMATION

SURROUNDING SKATE PARK CONTEXT

SURROUNDING SKATE PARK CONTEXT

The existing skate park analysis showed that there are a variety of new and old parks within the region. Many of the older parks have been left with little maintenance allowing them to weather and deteriorate in quality. There are a number of facilities that have been built in the last 5 years that are of high quality and meet current skate park trends for functionality.

The skate parks included within this contextual analysis provide a variety of use for different riders and different skill levels. There are a mixture of larger and smaller facilities with transition and street style layouts. The majority are traditional style early 2000's skateparks, with a concrete finish and a focus on skate and little integration of surroundings or materiality.

With this in mind the proposed Prahran Skatepark should look to integrate and celebrate its urban setting with a unique street plaza full of materiality and contemporary features unlike the surrounding facilities. It will be designed to integrate into the surrounding skate park network and contribute to filling in the identified gaps in the active recreation provision. Responding to the findings of this analysis will enable the facility to become a destination for the end users within the broader region while still catering to the local skatepark users.

1. ST KILDA SKATEPARK
(DISTRICT LEVEL FACILITY)



2. DONCASTER SKATEPARK
(LOCAL LEVEL FACILITY)



3. RIVERSLIDE SKATEPARK
(DISTRICT FACILITY)



4. ELWOOD SKATEPARK
(DISTRICT LEVEL FACILITY)



5. BOXHILL SKATEPARK
(REGIONAL LEVEL FACILITY)



6. CLIFTON HILL SKATEPARK
(LOCAL LEVEL FACILITY)



7. KENSINGTON SKATEPARK
(DISTRICT LEVEL FACILITY)



8. FITZROY BOWL
(LOCAL LEVEL FACILITY)



9. GRAHAM STREET SKATEPARK
(LOCAL LEVEL FACILITY)



05

DRAFT CONCEPT: CONSULTATION FEEDBACK

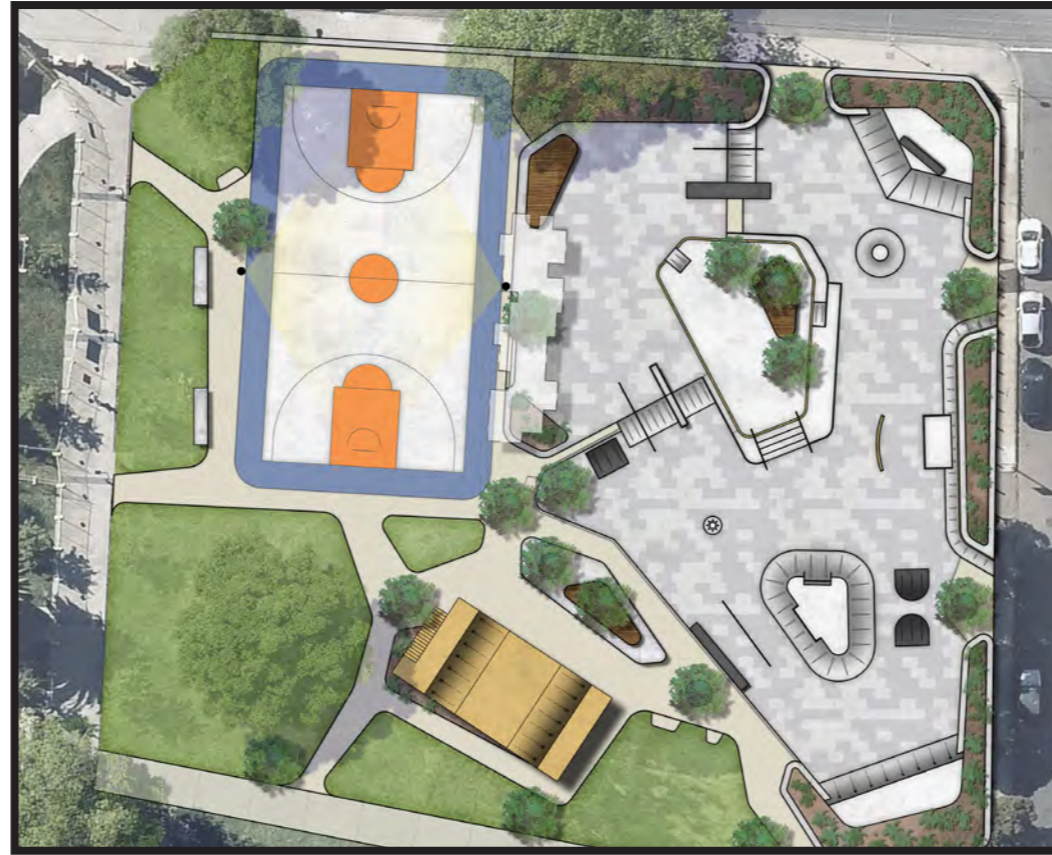
DRAFT CONCEPT DESIGN CONSULTATION

The draft concept design consultation comprised of two Community workshops, one video conference with a selected skater user group and an on site broader community consultation.

The video conference consultation was held on Thursday the 17th of February and was attended by long time users of the existing facility. Attendees took part in discussion of the project with skate specific comments and suggestions. There was a strong presence of skate and BMX attendees that were interested in the technical and functional aspects of the Draft Concept Design.

The on site consultation was held at the Prahran Skatepark on Saturday the 26th of March. This was more informal and set up as a drop in session where attendees were brought up to speed on the project progress, had informal discussion about the draft concept design and completed questionnaires. This consult attracted many community members with a vested interest in the project; including future users, families, stakeholders and local residents.

The following pages outline key responses received during group discussions and a summary of the feedback from the consultation questionnaire available at the community workshops:

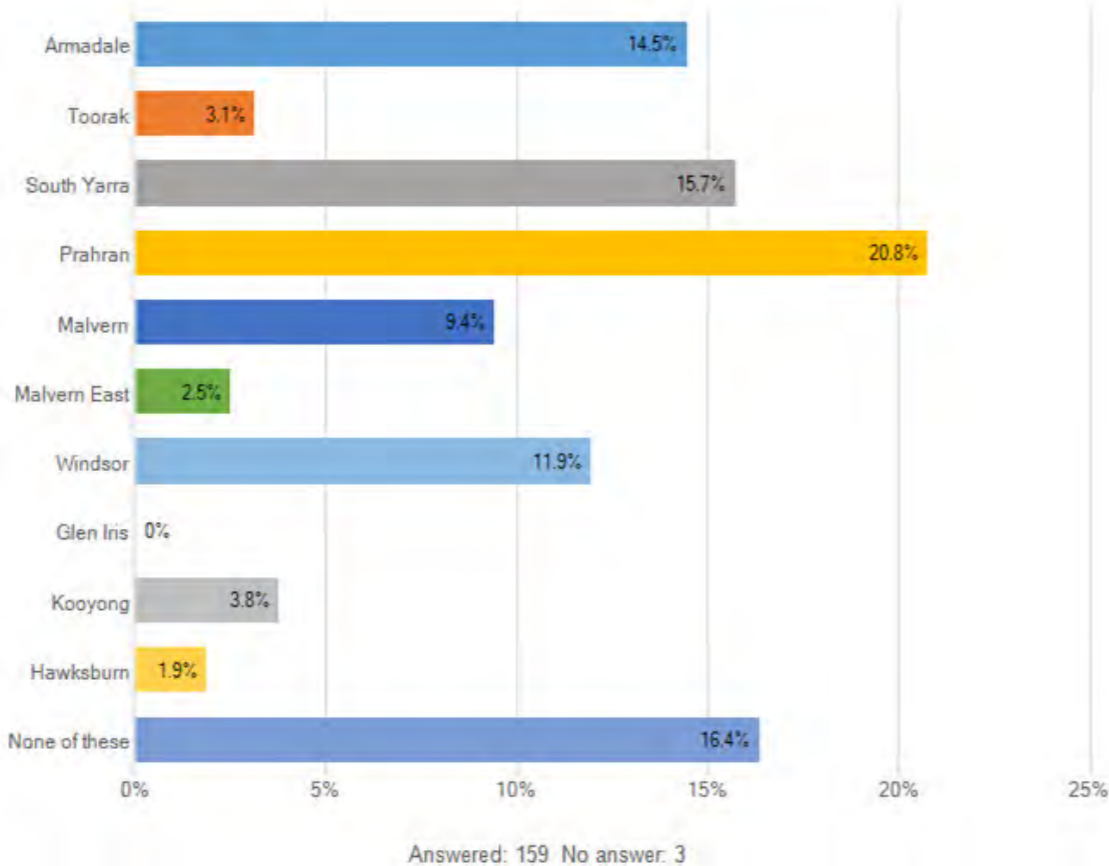


DRAFT CONCEPT DESIGN

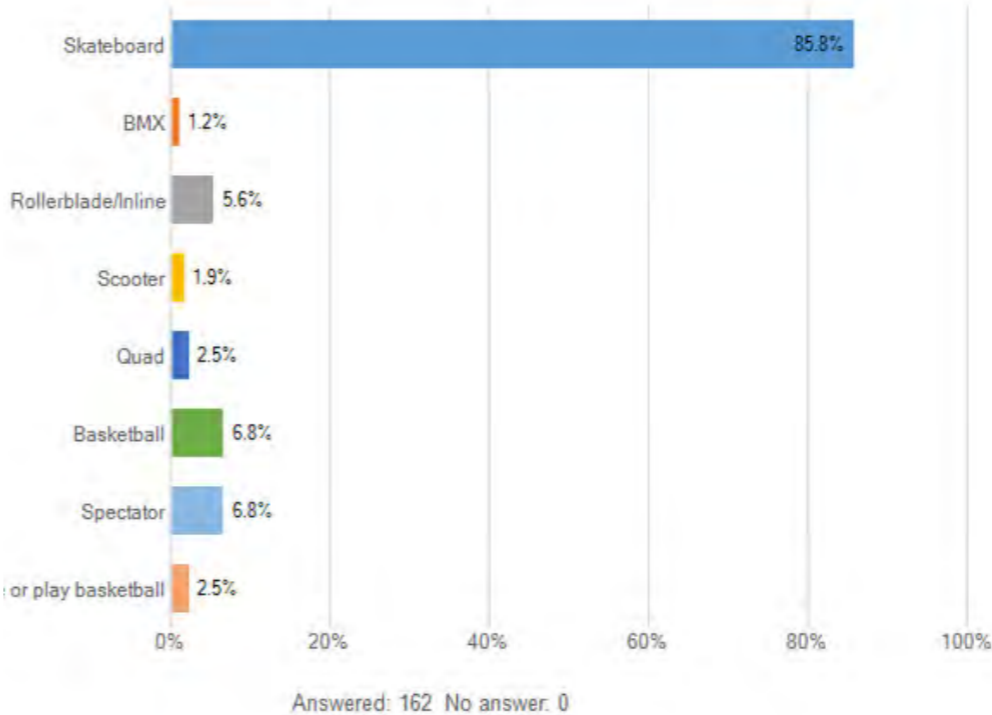


COMMUNITY FEEDBACK

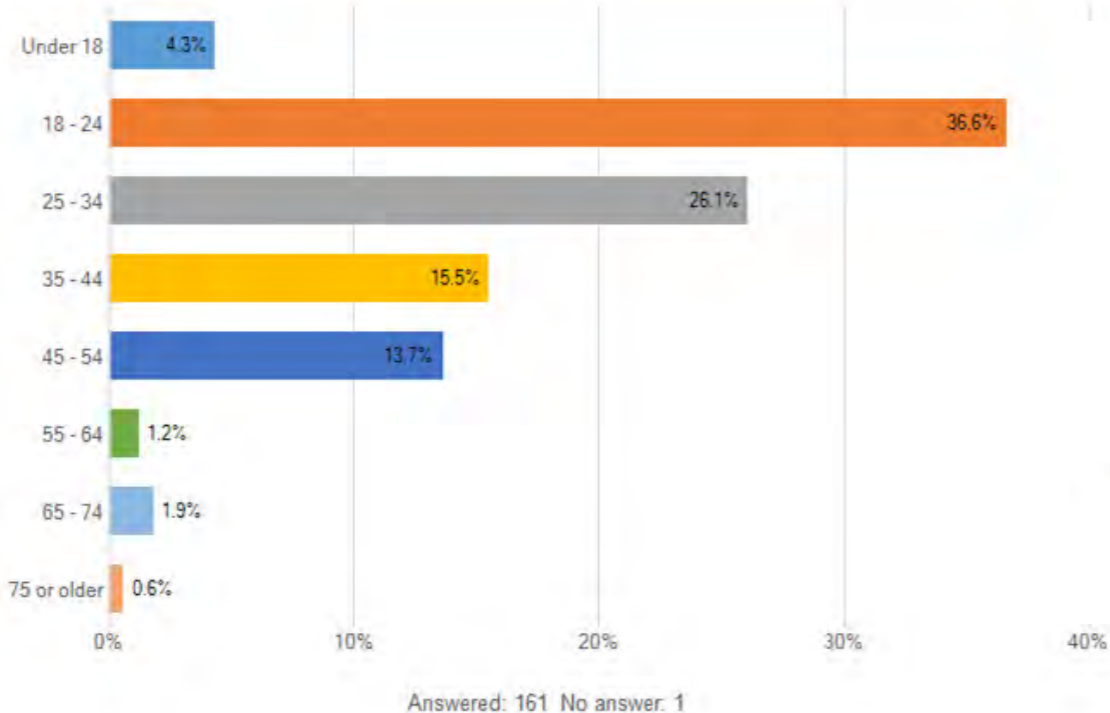
WHICH SUBURB DO YOU LIVE IN?



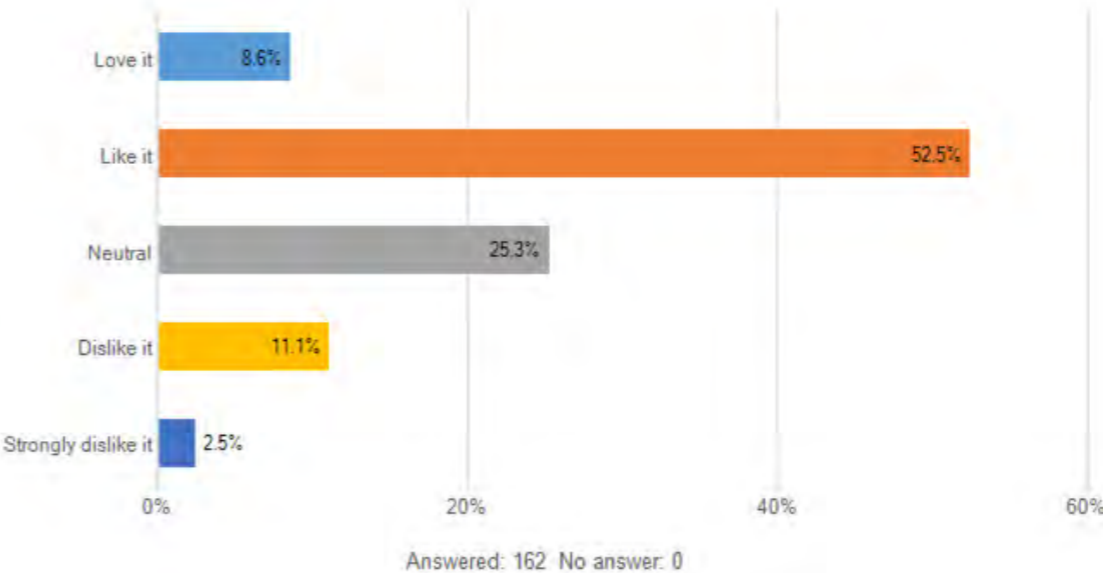
WHAT ACTIVITIES DO YOU LIKE TO BE INVOLVED IN?



WHO WAS INVOLVED?



HOW DO YOU FEEL ABOUT THE DRAFT CONCEPT PLAN FOR THE SKATEPARK AND BASKETBALL COURT?



DRAFT CONCEPT CONSULTATION SUMMARY

WHAT IS YOUR FAVOURITE FEATURE OF THE SKATEPARK?

Participants were asked to identify their favourite skate and non-skate features within the draft concept design. This helps to prioritise individual features and inclusions within the design, when moving forward into the final concept.

There was a variety of responses to this question but predominately most of the comments were in regards of the vert ramp. The majority of people want the vert ramp to be included within the design but would like it to be full size and metal. Many other comments in were related to the street plaza area and were positive, with an overall suggestion of adding more flow within the layout.

The participants also appreciated most of the ancillary landscape features such as the inclusion of seating and the basketball court.

IS THERE ANY FEATURE THAT YOU DON'T LIKE?

Majority of comments show that the community was not happy with having the vert ramp smaller than the current one and made of timber panel finish, most comments stated that the vert ramp should be 40ft wide full size and metal.

A couple of people mentioned that there were too many ledges within the design and more flowing transition elements should be incorporated.

ANY OTHER COMMENTS?

Many participants felt as though the draft concept encompassed the majority of inclusions they would like the facility to have. However, with all skate and youth spaces it is very subjective to riding and user styles and their level of ability plus intended use.

This response saw many different 'one off' responses, although some responses began to show trends:

- Add corner pockets to end quarter pipe (No 1).
- Vert should be full size, 40ft wide and steel.
- Inclusion of lighting in the skatepark.
- Inclusion of a mini ramp.
- Delete the volcano obstacles (No 7, 17) and keep the plaza more open.
- Add a corner hip on the north-western corner.

DRAFT TO FINAL: KEY CHANGES

DRAFT



FINAL



- 1** Vert ramp changed to be full size (14ft high 40ft wide) Also the orientation of the vert ramp has been reviewed and approved by local skate representatives.

2 A mini ramp has been included in the design as a result of many comments suggesting this is an important item.

3 Corner quarter pipe hip added to create more flow between different sections and a starting / stopping point for users to begin their run.
- 4** Corner pockets added to end quarter pipe to generate more flow.

5 China bank changed to quarter pipe

6 Entry trees moved to garden beds to avoid conflict with quarter pipe hips.

7 Volcano and wallie block removed as these were not favoured obstacles by the community.
- 8** Hubba on large stair set added for more interest and larger trick selection.

9 Main shelter refuge area moved to the lower section of the facility to better serve all disciplines and avoid conflict with basketball events.

10 Kicker to Kicker obstacle replace with multi use A-frame feature to allow for more variety.

11 Bank added to open up flow up and down raised level change.
- 12** Sharper hips added to central island feature for increase functionality.

13 Long round down rail incorporated to add more variety as there is already a normal down rail.

06

CONCEPT DESIGN

CONCEPTUAL THEMING

Theming for the facility takes inspiration from the rich mix of food, art, culture, retail and commerce that makes Prahran so diverse. The interesting mix of heritage listed old buildings combined with an influx of contemporary architecture styles forms an fascinating clash and creates a new look within inner City suburbs.

The design of the new Princes Garden skate plaza looks to evolve the traditional idea of skatepark and form a fresh new facility with clean dynamic lines. It is safe and open for all to see in and out of and take in the action or hang out and relax in a green plaza pocket.



PAYING HOMAGE TO THE OLD SKATEPARK

OLD SKATEPARK OBSTACLES REPLICAS

The Prahran Skatepark is a high profile inner city facility and provides major connections into the skate culture of Melbourne. This has been generated through a high number of end users utilizing this space throughout their years of skateboarding and development, the historic competitions and jams that have been held at the facility and its deep rooted presence in the cultural through well known photo shoots and visitation from high profile skaters.

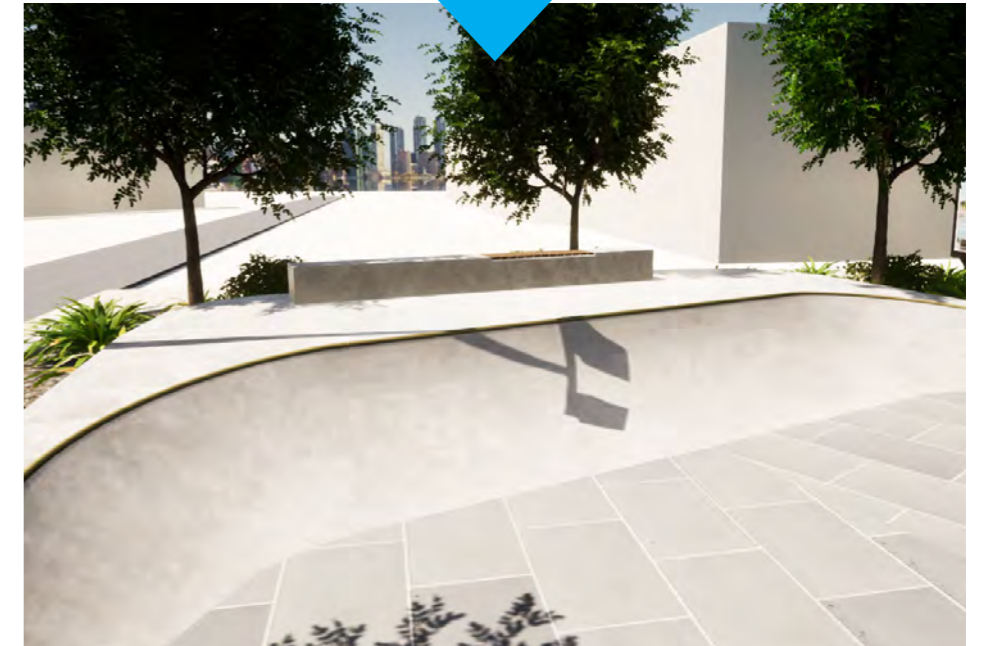
As such, a key objective for the proposed design is to replicate a number of the much loved features within the old park with new and reinterpreted obstacles that will enhance the park and create a more contemporary facility.

The following image comparison study demonstrates how Convic have addressed this objective, identifies the existing features within the current facility and what they will be replaced with in the proposed design.

FLAT BANK HIP



QUARTER PIPE



PAYING HOMAGE TO THE OLD SKATEPARK

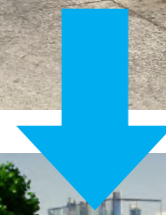
HAND RAIL



OUT LEDGE



LONG LEDGE



LEGEND

SKATE WORKS

- 1 Quarter pipe replica
- 2 380H Curved ledge
- 3 Flat bank island with raised pad
- 4 Bank to ledge
- 5 350H Round flat bar
- 6 350H Bluestone ledge
- 7 Kerb edge
- 8 Bluestone euro gap
- 9 Handrail replica (reuse existing)
- 10 600H Flat bank
- 11 450H Hubba
- 12 750H Quarter pipe hip
- 13 400H Out ledge
- 14 Out Ledge replica
- 15 450 Round long handrail
- 16 Flat bank hip and ledge replica
- 17 600H Flat bank
- 18 Long ledge replica
- 19 Gap with handrails and hubba
- 20 Kicker over ball
- 21 400H A-frame with round rail
- 22 750H tight quarter pipe
- 23 Jersey barrier
- 24 Relocated Vert Ramp
- 25 1200H Mini ramp

LANDSCAPE WORKS

- 1 Seating
- 2 New trees
- 3 Planting
- 4 Basketball Court
- 5 Drinking Fountain
- 6 Rubbish Bins

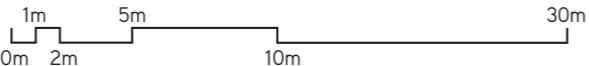
PROVISIONAL WORKS

- 1 Shade Shelter
- 2 Basketball and Skatepark Lighting



CLIENT: 
City of STONNINGTON

DESIGNER:
CONVIC

SCALE: 1:300 @ A3




PROJECT:
PRAHRAN SKATEPARK

TITLE:
FINAL CONCEPT
DESIGN

DATE:
06.06.2022

REVISION:
B

07

3D OVERVIEW 1

CHAPEL
OFF CHAPEL



3D OVERVIEW 2



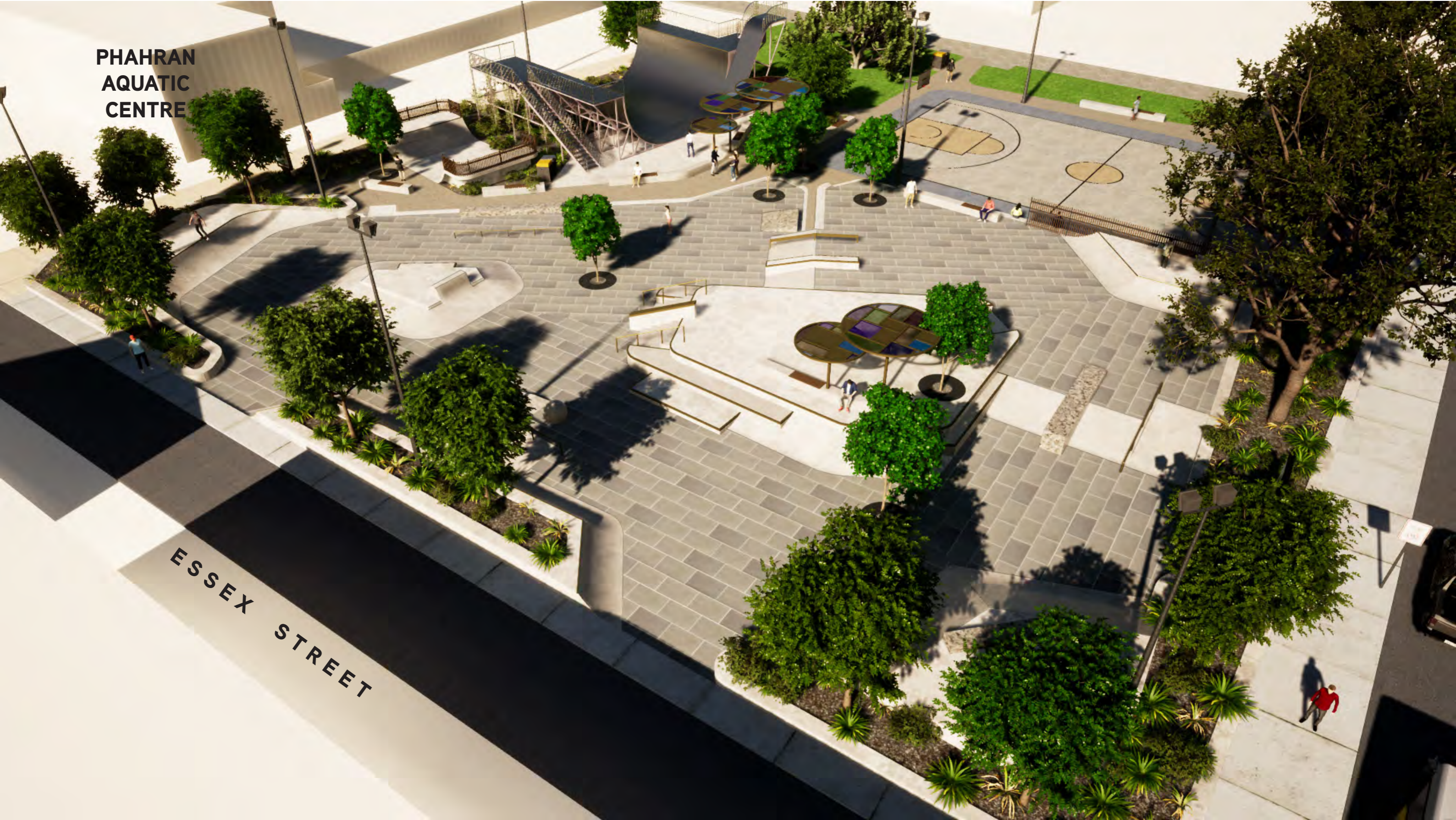
3D OVERVIEW 3



3D OVERVIEW 4



PHAHNAN
AQUATIC
CENTRE



3D CLOSE-UP VIEWS



A-FRAME AND BIG LEVEL CHANGE



CURVED LEDGE, CENTRAL ISLAND AND QUARTER POCKET

3D CLOSE-UP VIEWS



SMALLER LEVEL CHANGE WITH LONG RAIL AND GRANITE LEDGE



SMALLER LEVEL CHANGE WITH GRANITE EURO AND FLAT DOWN

3D CLOSE-UP VIEWS



FLAT BAR AND GRANITE LEDGE



MINI RAMP AND VERT RAMP

3D CLOSE-UP VIEWS



BASKETBALL COURT



SHELTER VIEWING AREA

08

PLAZA PALETTE

PLAZA MATERIALITY

Skateparks are continuously evolving from the early 90's back of house grey concrete jungle to contemporary urban spaces with real paving, seating areas and shaded green space to form dynamic hangout spaces where youth want to be.

Convic have adopted a number of landscape architectural principles within the design of this space to create a skatepark that has the look and feel of an urban plaza. This forms a new typology of skatepark that is integrated within the public realm and creates a sensation that the skate community has a purpose built and designed high end space within the urban realm



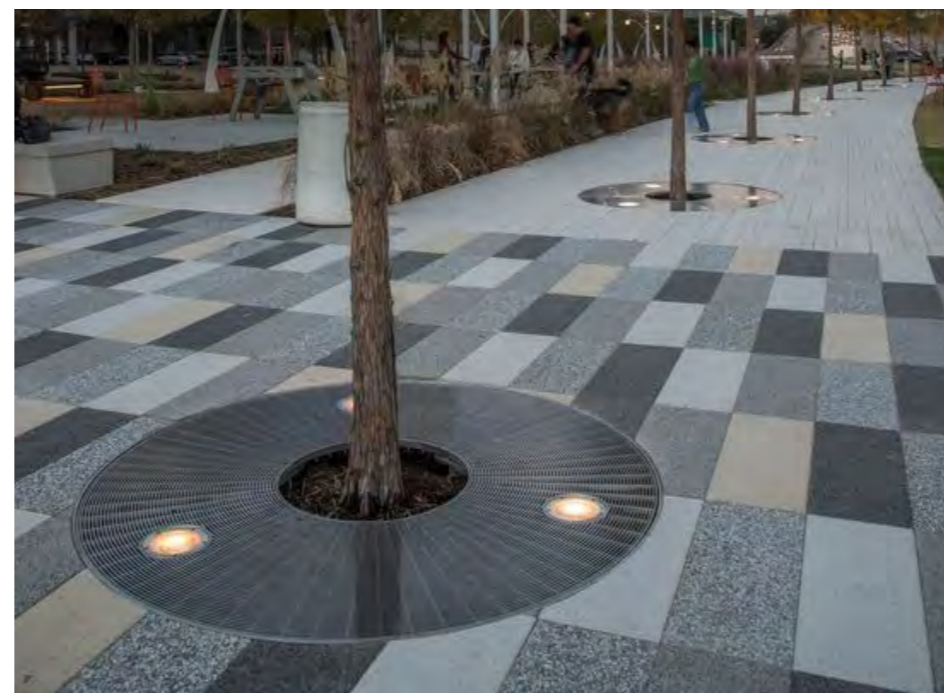
MATERIALS PALETTE

PLAZA MATERIALITY

Street style skateparks reflect real urban areas with many of the obstacles mimicking that of the city scape. The Prahran Skatepark will introduce similar landscape architectural design responses to the urban realm. Providing contemporary paving that is skateable throughout the plaza and can tolerate the high impact environment will provide a space that integrates with the surrounding precinct.

The inclusion of trees in tree grates dotted through the space will provide the end user with a feeling they are skating within a real street plaza and be the first of its kind in Victoria - putting this Youth Space on the map as a destination facility within the region.

1. Bluestone paving
2. Exposed aggregate footpaths
3. Concrete block seating with timber inlays
4. Skateable tree pit grates
5. Granite skateable ledges



MATERIALS SCHEDULE

MATERIAL SCHEDULE

- 1 Concrete seat with timber inlay
- 2 Concrete footpath standard grey
- 3 Concrete footpath exposed aggregate
- 4 Concrete skatepark finish standard grey
- 5 Concrete pedestrian finish standard grey
- 6 Large bluestone pavers
- 7 Concrete miniramp
- 8 Timber slats balustrade
- 9 Full depth bluestone ledges
- 10 Painted skatepark coping
- 11 Bins to Council standards
- 12 Drinking fountain to Council standards
- 13 12M High powder coated light poles with sports level lighting
- 14 Bespoke steel and perspex shade shelters
- 15 Painted concrete basketball court
- 16 Powder coated basketball hoops
- 17 Bespoke steel basketball court fence
- 18 Bespoke steel entry sign
- 19 Powder coated steel tree grates, tree guard, tree cells and mature trees
- 20 Local dense planting
- 21 Mature trees
- 22 Steel surface vert ramp with exposed painted frame
- 23 Climbing plants and stainless steel climbing aids on vert ramp sides



09

NEXT STEPS

MOVING FORWARD

Upon council endorsement of the final concept design, the concept will be presented to the user stakeholder group for final viewing and discussion to round off the engagement process. This will outline how the concept has evolved to incorporate key community input. This continued involvement connects the community with the project design process and ultimately creates a vested interest in the final outcome.

The Final Concept Design will then be released as a design and construction tender in late 2022.



CONVIC

CREATE COMMUNITY

UNIT 13, 46-50 REGENT STREET
RICHMOND VIC 3121 AUSTRALIA
T +61 3 9486 9899 F +61 3 9486 9088
CONVIC.COM