

# St George's Anglican Church Complex, 292-296 Glenferrie Road, Malvern – Statement of Significance, June 2021

**Heritage place:** St George's Anglican Church Complex,  
292-296 Glenferrie Road, Malvern

**PS ref no.:** HO43



Figures 1-3. (R-L, top to bottom) St George's Anglican Church, Vicarage and Parish Hall (GJM Heritage, July 2020)

## ***What is significant?***

The St George's Anglican Church Complex, 292-296 Glenferrie Road, Malvern, built from 1865 to 1925, comprising a church, vicarage, and parish hall (former Sunday school).

Elements that contribute to the significance of the place include (but are not limited to):

### *All Buildings*

- The original external form, materials and detailing of the three buildings as well as their additions and alterations to 1925
- The high level of integrity to their 1925 presentation.

### *Church*

- Early English Gothic style
- Random coursed rubble bluestone walls with freestone dressings

- Steep slate-clad roofs
- Cruciform plan with nave and transepts
- Tall lancet windows
- Stepped bluestone buttresses with dressed cappings
- Elaborate fleche at transept crossing
- Gabled roof vents.

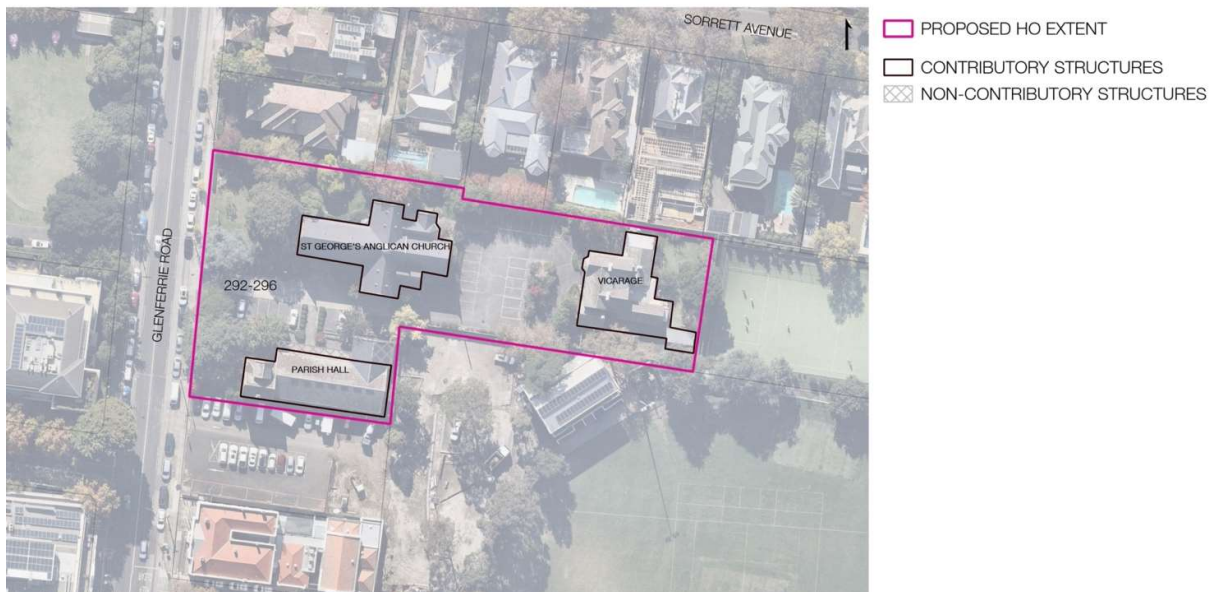
#### *Vicarage*

- Asymmetrical two-storey form with single storey wings to the side and rear
- Brick walls (overpainted)
- Slate-clad gabled roofs
- Classical framed entrance porch with dentilled cornice
- Polygonal front bay windows with slate-clad hoods
- Large, tall chimneys; two with four stacks each
- Rectangular double-hung windows with subtle pointed heads.

#### *Parish Hall*

- Asymmetrical three-storey form with large single storey rear wing
- Red brick walls with contrasting cream brick and freestone facings
- Steep slate-clad gabled roofs
- Brick corbelling and buttressing
- Tall chimney with corbelled capping and cream brick diaper work
- Tall double-hung rectangular windows and single circular window in front gable.

Later alterations and additions are not significant. This includes the slate-clad verandah to the north side of the hall and alterations at the eastern end.



#### ***How is it significant?***

St George's Anglican Church Complex is of local historical, representative (architectural) and aesthetic significance to the City of Stonnington.

### ***Why is it significant?***

---

St George's Anglican Church Complex is a large and intact group of religious buildings, including a church, vicarage and parish hall (former Sunday School). These buildings clearly demonstrate the operations of the Anglican church in the municipality – and in suburban Melbourne more broadly – for over 150 years, from the latter half of the nineteenth century through to the twenty-first century (Criterion A).

St George's Anglican Church Complex is a fine and intact representative example of a religious complex in suburban Melbourne. It contains three substantial buildings from the Victorian period which have subsequently been subject to alterations into the early twentieth century to accommodate increased worshiper numbers. The bluestone church, with steep slate-clad roofs, tall lancet windows, stepped buttresses and elaborate fleche, is a fine example of the Victorian Gothic style (Criterion D).

St George's Anglican Church Complex is a well-considered and carefully detailed complex of church buildings. Set back from Glenferrie Road in a landscaped setting, the bluestone Gothic church, brick vicarage and red brick parish hall form a picturesque group of buildings (Criterion E).

### **Primary sources:**

---

Malvern Heritage Review, GJM Heritage (June 2021)