

Your rates explained 2020–21



City of
STONNINGTON

How can I pay my rates?

Rates are to be paid either

- » **in full** – by 15 February 2021
- » **instalments** – due 31 October 2020, 30 November 2020, 28 February 2021 and 31 May 2021

For payment options, visit stonnington.vic.gov.au/rates

Financial difficulty

We appreciate that COVID-19 has caused financial stress for many people and businesses. Visit stonnington.vic.gov.au/covid19 for information about available support, including financial counselling and no interest loans through our partnership with not-for-profit organisation Good Shepherd, or call **8290 1333**.

Pensioner rebate

A State Government pensioner rebate on rate payments is available for holders of a pensioner concession card issued by Centrelink or the Department of Veterans Affairs; Gold Repatriation Health Card – Totally and Permanently Incapacitated (TPI) issued by the Department of Veterans Affairs; or Gold Repatriation Health Card – War Widow (WW) issued by the Department of Veterans Affairs.

The State Government rebate is 50 per cent of the rates payable to a maximum of \$241 plus a \$50 concession on the Fire Services Property Levy. The maximum available is \$291 for the 2020–21 financial year.

The pensioner rebate on Council rates also extends to Department of Veteran Affairs POW and EDA card holders. This is only available to pensioners residing at the property they are applying for the exemption.

Visit stonnington.vic.gov.au/rates or call **8290 1333**.

How your rates are calculated

Council rates are calculated by multiplying a property's Capital Improved Value by the Rate in the Dollar.

The Capital Improved Value (CIV) is the market value of a property, including buildings and other improvements. The CIV is determined each year by a property valuation completed by the State Government.

The Rate in the Dollar is set by Council, and is calculated by dividing the combined CIV of all rateable properties by the dollar amount budgeted to fund Council's annual capital works and community services programs.

Example general rates calculation:

$$\begin{array}{r} \$800,000 \text{ (capital improved value)} \\ \times 0.0010177 \text{ (rate in the dollar)} \\ \hline \$814.16 \text{ (general rates)} \end{array}$$

Rates are calculated for each property individually, using the same rate in the dollar.

Rate capping

In 2016, the Victorian Government introduced Rate Capping, a system that determines the amount a council can increase rates. For 2020–21 the State Government applied a rate cap of two per cent. To help fund our works and services program, a two per cent increase has been applied to the 2020–21 budget.

The rates you pay is impacted by any rate increase and your property's capital improved value. Your rates may be higher or lower than two per cent:

- » If the market value of your property has increased by more than the City of Stonnington average, your rates will increase by more than two per cent.
- » If the market value of your property increased in value by less than the City of Stonnington average, your rates will increase by less than two per cent.

Please note: A decrease in the market value of your property does not necessarily mean a reduction in your rates.



Pool registration deadline extended

The State Government has extended the deadline for swimming pool and spa registrations until **1 November 2020**. Homeowners must register and pay their fees to complete the process.

Visit stonnington.vic.gov.au/pools



Shop local and support your community

COVID-19 has had a huge impact on our community, especially small business. Our **support local guide** features Stonnington traders operating within the State Government's restrictions.

Visit stonnington.vic.gov.au/supportlocal

Budget highlights 2020–21

RATE RELIEF

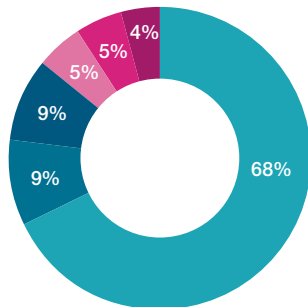


FOCUS ON LOCAL PROJECTS



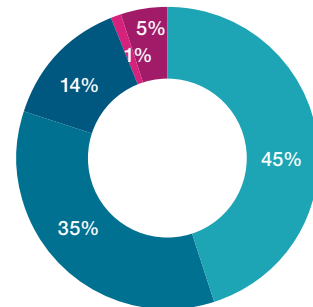
Operating income

● Rates and charges	\$119.58m	68%
● Statutory fees and fines	\$15.14m	9%
● User fees	\$15.70m	9%
● Grants	\$9.81m	5%
● Contributions – monetary	\$8.00m	5%
● Other income	\$7.44m	4%
	\$175.67m	100%



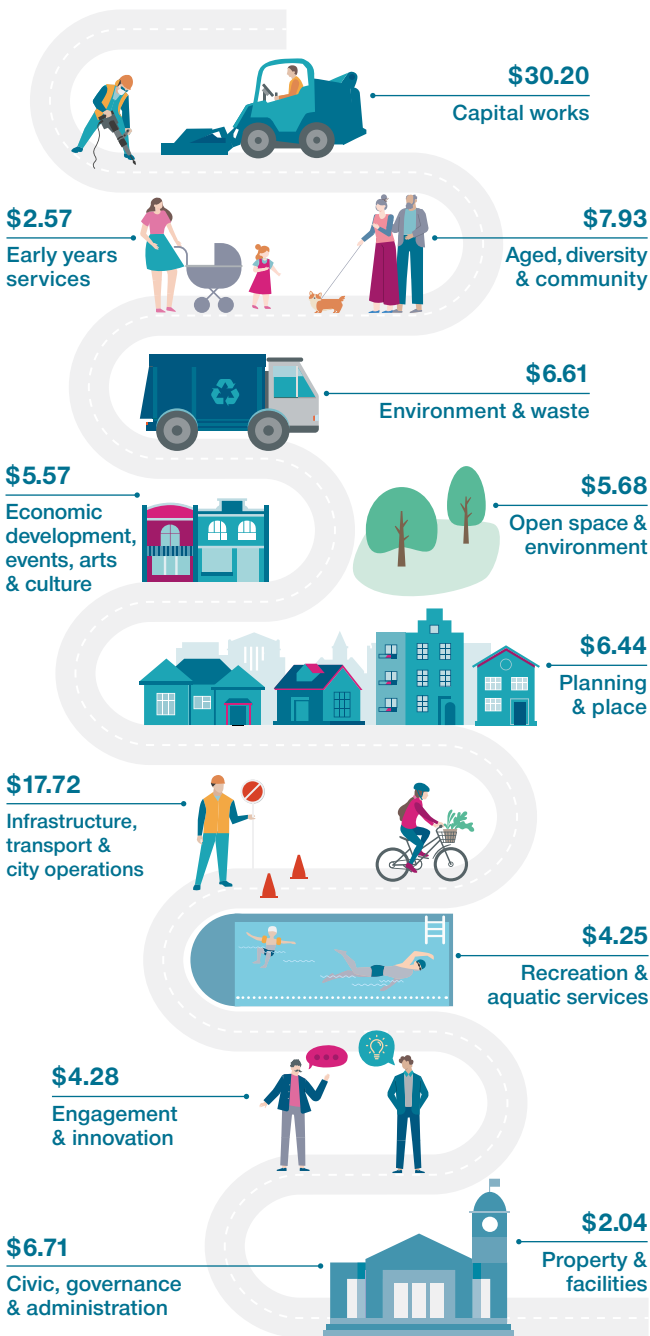
Operating expenditure

● Employee costs	\$69.56m	45%
● Materials and services	\$55.06m	35%
● Depreciation and amortisation	\$21.05m	14%
● Community grants	\$2.19m	1%
● Other expenditure	\$7.85m	5%
	\$155.71m	100%




Where do my rates go?


For every \$100 we spend:



Contact us

 **8290 1333**

 PO Box 58, Malvern Victoria 3144

 council@stonnington.vic.gov.au

Visit us

 stonnington.vic.gov.au

 **Stonnington City Centre**
311 Glenferrie Road, Malvern

*closed due to COVID-19 restrictions

Connect with us

 facebook.com/stonningtoncouncil

 twitter.com/StonningtonNews

 instagram.com/whats_on_stonnington

 linkedin.com/company/city-of-stonnington

Hearing or speech impairment

We are a national relay service friendly organisation. If you are deaf or have a hearing or speech impairment, contact us through the National Relay Service (NRS):

- » **TTY** users call **133 677**, then ask for **8290 1333**
- » **Speak and listen** users, call **1300 555 727**, then ask for **8290 1333**
- » **Internet relay** users, connect to the NRS, then ask for **8290 1333**

Community languages

Call the Stonnington Community Link, a multilingual telephone information service.

Mandarin 普通話 9280 0730

Cantonese 廣東話 9280 0731

Greek Ελληνικά 9280 0732

Italian Italiano 9280 0733

All other languages 9280 0736

Polish Polski 9280 0734

Russia Русский 9280 0735

Indonesian Bahasa Indonesia 9280 0737

Vietnamese Tiếng Việt 9280 0748



City of
STONNINGTON