

Residents' guide

**AN A TO Z OF EVERYTHING
STONNINGTON**



City of
STONNINGTON





Welcome to Stonnington

**Welcome to the
neighbourhood.
We know you're going
to love it here.**

We're proud to deliver more than 100 services to our community and our great city.

We serve and support all members of our community – at all ages and in all stages of life – babies, children, teenagers, youth, parents, grandparents, seniors and families, together with homeowners, (property owners), renters, businesses and visitors.

We look after our people, parks, precincts and places to ensure our community stays vibrant, connected, safe, inclusive, active, happy and healthy.

We support our businesses whether new or established to set up for success and to flourish. We care for our furry friends, with a dedicated animal management team on call, pet-friendly parks and an animal shelter for lost or abandoned pets and adoptions. We collect your bins fix the paths, build, maintain and refurbish Council-owned buildings and facilities and we plant trees.

We love Stonnington and so will you.

Stonnington comprises the suburbs of Armadale, Kooyong, Malvern, Malvern East, Prahran, South Yarra, Toorak, Glen Iris and Windsor.

There's always something happening in Stonnington – from within our parks, gardens, pools and public spaces – to our venues, libraries, pools, sports centres, clubs and grounds.



From major Council festivals and events to concerts, cultural events and special community days, from shopping to sport, from cafés, bars and restaurants, to amazing nightlife and venues, live music and shows, from high-end fashion to lux furniture and art, from flavoursome food to full-on fitness, health and lifestyle, from walks in gardens to jogging tracks and bike paths, you will love Stonnington.

There are many ways to find out about what's happening in Stonnington.

Keep up-to-date with the latest news and events, follow us on socials, and subscribe to our What's On e-newsletter. Our Stonnington News magazine is delivered to your door regularly and can also be viewed on our website stonnington.vic.gov.au/stonnington-news



Acknowledgement Statement

We acknowledge that Stonnington is on the Traditional Lands of the Wurundjeri Woi Wurrung and Bunurong peoples of the East Kulin Nations and pay our respect to their Elders past, present and emerging.

We extend that respect to all Aboriginal and Torres Strait Islander peoples. We acknowledge their living connection to Country, relationship with the land and all living things extending back tens of thousands of years.



I'm looking for...

Indigenous support	04
Cultural diversity	05
Waste and recycling	06
Children and families	08
Young people	09
Ageing well	10
Pet ownership	11
Rates	12
Planning	14
Locations + map of Stonnington	16
Libraries	20
Parks and gardens	22
Pools and recreation	23
Shopping and business	24
Arts and culture	26
Chapel Off Chapel	29
Transport and parking	30
Sustainability and open space	32
Council details	34



Supporting our Indigenous community

Stonnington is committed to reconciliation with our community and we support Indigenous members of our community.

The City of Stonnington Reconciliation Action Plan 2022–24 has been developed in consultation with the Wurundjeri Woi Wurrung Cultural Heritage Aboriginal Corporation, Bunurong Land Council Aboriginal Corporation, Reconciliation Stonnington, and our community, and is endorsed by Reconciliation Australia.

The plan articulates our commitment for reconciliation as a community in which traditional custodians' connections to the land are acknowledged, where history is respected, and where the diverse cultural backgrounds, experiences and needs of Aboriginal and Torres

Strait Islander peoples are understood and valued.

Our vision for reconciliation is a united, equitable community where Aboriginal and Torres Strait Islander peoples' voices, experiences and ideas are heard and respected; and where there is deep understanding of the wrongs of the past and their impact.

Each year we proudly support NAIDOC Week. NAIDOC Week celebrates the history, culture and achievements of Aboriginal and Torres Strait Islander peoples and stands for National Aboriginal and Islanders Day Observance Committee.

NAIDOC Week is a great opportunity to learn more about Aboriginal and Torres Strait Islander communities. A theme is chosen every year to reflect the important issues and events for NAIDOC.



Supporting cultural diversity



We know that cultural diversity in our community provides richness and benefits everyone.

To support living together in harmony, we offer accessible and inclusive services and programs to meet the needs of residents from culturally and linguistically diverse (CALD) backgrounds.

Supporting access and inclusion

All Stonnington residents have the right to enjoy wellbeing, dignity and independence. We are committed to providing safe and inclusive spaces and services for all residents, including those with a disability, their carers and families.

We also recognise that our community is enriched by many people, from many cultures, living together and participating in community life.

Supporting the LGBTIQA+ community

The City of Stonnington recognises and values our community's diversity and is committed to providing safe and inclusive environments and services.

Citizen of the Year awards

These awards recognise and honour people who have a commitment to volunteering, contributing to the community and making our city a better place.

Citizenship ceremonies

Citizenship ceremonies are held throughout the year, acknowledging and welcoming new residents to Australia and to our community.

It's not all rubbish

We are committed to minimising waste and maximising resource recovery by supporting our community to reduce waste and recycle a wide range of materials.

Bins and collections

- » **Garbage bin** – weekly garbage collection service. The waste placed in this bin is sent to landfill.
- » **Recycling bin** – fortnightly recycling collection service on the same day as your garbage collection. Your recycling is taken to a materials recovery facility, where the different materials are separated and bundled for reprocessing into a range of items.
- » **Garden and food waste bin** – fortnightly user-pays garden and food and green waste collection service on the same day as your garbage collection. This service is for ratepaying residents only. If you are renting, check with your landlord.

Visit stonnington.vic.gov.au/services/waste-and-recycling, click on 'Services near me' to find out about:

- » your bin collection days
- » how to get a new or replacement bin
- » what happens when your bin does not get emptied
- » what goes in each bin.

Hard waste collection service

Council provides two hard waste collections per year – in autumn and spring. Look out for a brochure in your letterbox at least two weeks before the collection. Call us to discuss collection dates in your area or search your address on our website.

Stonnington Waste Transfer Station

Many different materials can be taken to the Transfer Station, located at 32 Weir Street, Malvern, including light globes, cardboard, fridges, TVs, computers, batteries and motor oil.

Find out about fees and accepted items on our website.

Opening hours:

10am – 3.30pm, Monday to Friday

9am – 3pm, Saturday

10am – 3pm, Sunday

Closed:

New Year's Day, Good Friday, Easter Sunday, Christmas Day and Boxing Day



Reduce waste sent to landfill

Visit our website to find out about the ways you can reduce the amount of waste you send to landfill.

Food waste

All food waste can be placed in your kerbside food and green waste bin. Alternatively, recycle your food waste at home with a discounted worm farm or compost bin from Council. In an apartment? Contact us to find out how to get a communal worm farm for your apartment building.

Electronic waste

Anything with a plug, battery or cord is considered electronic waste or e-waste. Drop off your e-waste at the Stonnington Waste Transfer Station, save it for your

next hard waste collection or recycle your items at one of our recycling stations located at our service centres, libraries and pools.

Chemicals in your home

Sustainability Victoria offers a free service to dispose of household chemicals safely and easily without harming human health or the environment.

Waste and recycling signage

Clear signage helps people understand what goes into each bin. Download our signage or collect from a Council Service Centre near you. We also have A4 bin stickers, A3 posters and A2 outdoor signs available to residents.

Support for children and families

We provide a variety of services for families in Stonnington. This includes childcare and playgroups, baby capsule hire, a toy library, preschool dental service, an immunisations program and maternal and child health services.

Early years services

Our early years services offer nurturing, welcoming and secure environments for children to learn, grow and belong so that children can develop confidently.

We provide high quality care and education, including long day care, sessional care and funded kindergarten services.

We have two Council-owned and operated early years centres for children aged three months to five years.

- » Princes Close Childcare Centre
17 Princes Close, Prahran
7.30am – 6pm, Monday to Friday
8290 3247
- » Winter Street Occasional Care Centre
5 Winter Street, Malvern
8am – 6pm, Monday to Friday
8290 6060

To find out more about our programs and facilities, kindergartens and schools, stonnington.vic.gov.au/services/children-and-family-services/early-years-services



Helping out young folk



The Stonnington Middle Years and Youth Services team supports the delivery of services to schools, service providers and community agencies across our city.

Our middle years and youth services programs are open to children and young people, aged 6 to 25 years, who live, work or visit Stonnington.

Operating out of our two centres in Prahran and South Yarra, the dedicated Middle Years and Youth Services team works collaboratively to deliver a range of support services, engagement and learning programs and social events.

Stonnington Youth Services be found at Grattan Gardens Community Centre, 40 Grattan Street, Prahran.

The Hub

Our Prahran Child and Youth Community Wellbeing Hub (The Hub) provides engagement, learning and recreational programs for children aged 6 to 12 years who live in public housing in the South Yarra and Prahran areas.

Based at the Horace Petty Housing Estate in South Yarra, The Hub is staffed by a dedicated team of professionals who support the young people and their families through socio-emotional and recreational activities and provide services to help them overcome barriers that can impact the young person's wellbeing and learning outcomes.

You're welcome to drop in, meet with a youth worker and have a chat about how you can get support or become involved in one of our great programs.

We're open Monday to Friday, 9am–5pm.

To stay up-to-date with all our news and programs and to connect with the Hub, check us out on facebook.com/stonningtonyouthservices/

Looking after our seniors

We offer older residents a range of services to help them stay connected and active in the local community. Services include community transport, health, wellbeing and social activities, including the Engaged program.

Community transport

We provide a safe, friendly and reliable bus service for eligible residents who find accessing public or private transport difficult. We provide transport to and from shopping centres, Malvern Library and for various social activities.

Social support

Council values of the contribution our senior members they make to Stonnington. Each year in October,

we celebrate the Victorian Seniors Festival. Council participates in the festival by hosting fun, free and low-cost events and activities featuring local community groups from the area.

100 reasons to celebrate with the Mayor

Residents who are celebrating their 100th birthday are encouraged to contact Council for special recognition by the Mayor.



So, I have a pet



We want you to enjoy your pets and animals, but it's important to be a responsible pet owner.

Do I need to microchip and desex my pets?

All cats are required by law to be desexed. Desexing dogs is not compulsory, but highly recommended if they're not intended for breeding purposes. All cats and dogs, three months of age or older, must be microchipped.

How do I report a lost dog or cat?

Wandering dogs or cats can be reported to our Animal Management team. You can call us on **8290 1333**.

Do I need to register my pet?

All dogs and cats more than three months of age must be registered. All the information you need to apply for registration can be found on our website.

How can I adopt a pet?

Visit the Save-A-Dog Scheme (SADS) in person or visit saveadog.org.au to learn about adopting or fostering an animal.

Where are my local off-lead parks and reserves?

We have 26 off-lead parks and reserves in Stonnington. Find out where you can walk your dog without a lead at [Off-lead parks and reserves City of Stonnington](#).

How many pets can I own?

Council has restrictions on the number of pets you can keep on your property. Find out everything you need to know on our website.

Celebrate your pets

Every year in March, we invite pet owners to bring their furry, feathered and scaly friends to Central Park for Pets in the Park. It's a fun, free, family-friendly event featuring pet parades, presentations and an array of stalls that offer the latest pet products, health tips and great information on responsible pet ownership.

All you need to know about rates

Council rates go towards providing vital services, infrastructure and maintenance in our community.

Where do my rates go?

- » Capital works: \$27.15
- » Programs for families: \$1.92
- » Community programs: \$6.89
- » Waste services: \$7.20
- » Open space and environment: \$6.45
- » Events, public art and business support: \$4.41
- » Town planning: \$5.82
- » Infrastructure, transport and city operations: \$17.30
- » Council buildings and property: \$1.65
- » Community sport, recreation and pools: \$4.30
- » Improving customer experience: \$8.20
- » Governance and administration: \$8.71

How are my Council rates calculated?

The City of Stonnington calculates your rates by multiplying two figures: your property's Capital Improved Value (CIV) and a rate in the dollar amount declared by Council.

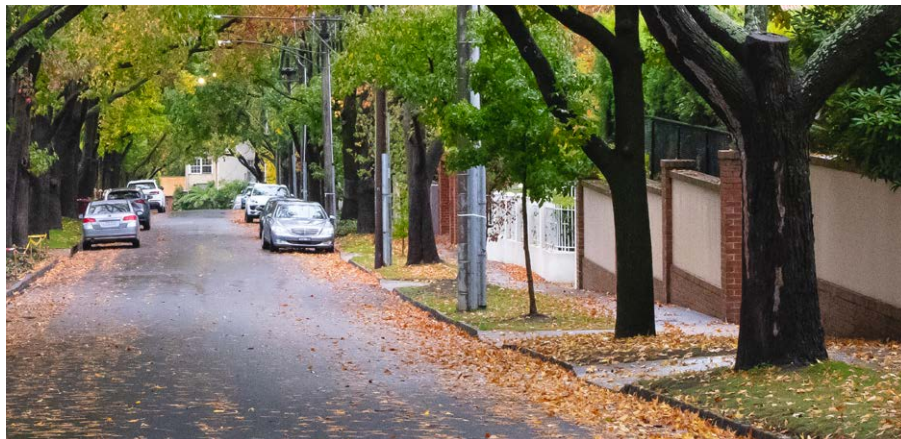
The CIV of a property is the value of the land plus any improvements on the land.

It's the approximate amount you could expect to be offered for the property if you put it on the market.

Council valuers conduct property valuations each year. They determine the CIV used to calculate your general rate.

The rate in the dollar is an amount set by the City of Stonnington to fund works and services.

Your rate notice includes the annual waste charges covering litter management, street sweeping, public place litter and recycling bins, waste education, hard and bundled green waste services, transfer station costs not covered by gate fees, shared costs of processing recyclables and organics and waste services administration; and the Fire Services Property Levy we collect on behalf of the State Government. This levy contributes to the cost of operating the Metropolitan Fire Brigade, replacing the levy previously funded through insurance premiums.



When do I need to pay my rates?

We offer a range of options on how you can receive and pay your rate notices. This includes Payreq or BPAY View, allowing you to receive your rates notices electronically. And you can enjoy the convenience of viewing, receiving and printing your rates notices via email.

How can I pay my rates?

You can either pay in four instalments: September, November, February and May throughout the financial year or as a single lump sum – you'll receive a notice for this payment in August.

Full rates payment is due on 15 February of each year.

If the first instalment amount isn't paid by the due date, we will assume you wish pay in one lump sum.

Financial difficulty

We have in place a rates hardship policy and other support measures to support people and businesses experiencing financial hardship.

Property owners can also receive an accessible notice.

We've partnered with Vision Australia to provide your rate notice in an accessible format of your choice, such as audio, braille, large print or e-text.

To find out more, contact us by email at council@stonnington.vic.gov.au or call 8290 1333.

An aerial photograph of a coastal city, likely Melbourne, showing a mix of urban development, green spaces, and a body of water in the background. A teal banner is overlaid at the top of the image.

Planning matters

How do I plan for building or renovating?

We provide advice on the planning process. Our team will assess your application against the Stonnington Planning Scheme, considering the interests of local residents and businesses.

For your face-to-face planning enquiries, visit us at the Stonnington City Centre, 311 Glenferrie Road, Malvern or for planning assistance call **8290 3329**.

What is the Stonnington ePlanning Portal?

The Stonnington ePlanning Portal is a free online service that allows you to submit documents or search any planning online anytime. You can submit planning permit applications, lodge inquiries, apply for certification, make objections and search the planning register for application and permit information.

Within this portal, there is the Application Portal for registered users to lodge planning application documents, objections and other

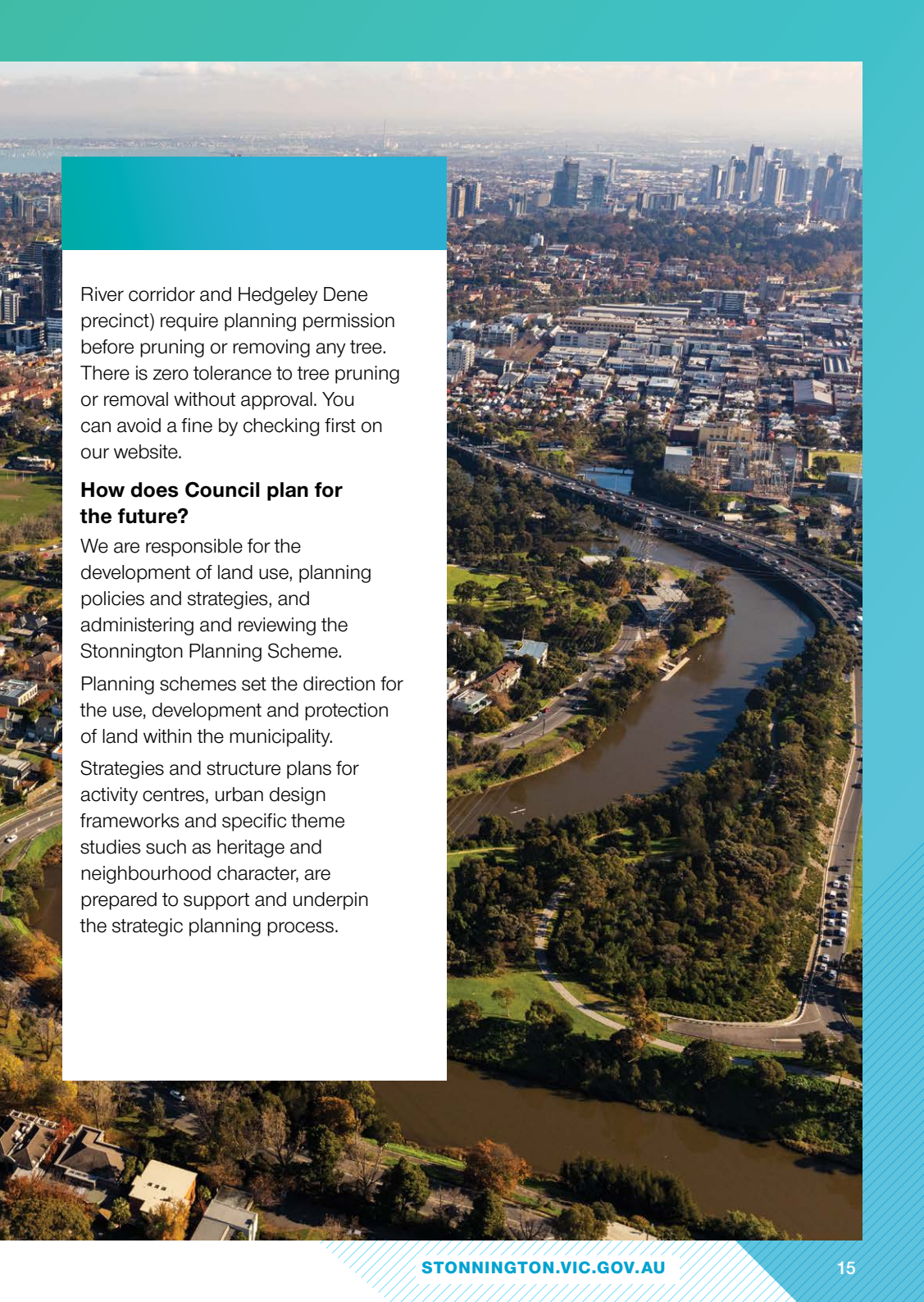
planning information requests and the Planning Register that can be used by both registered users and guests to track a application's progress, view documentation (including plans) and view the outcome of any planning permit application.

If you're applying for a planning permit your submission must have:

- » a completed application form (from our ePlanning portal)
- » the application fee
- » a recent copy of your Land Title, with details of any covenants or encumbrances noted on the title
- » a written summary of your planned works
- » a copy of any site plan
- » a copy of any elevations
- » any photos of the site.

Can I cut down a tree on my property?

To protect our urban forest, all trees across Stonnington, including those on private property, are protected by our local law. Two areas (the Yarra



River corridor and Hedgeley Dene precinct) require planning permission before pruning or removing any tree. There is zero tolerance to tree pruning or removal without approval. You can avoid a fine by checking first on our website.

How does Council plan for the future?

We are responsible for the development of land use, planning policies and strategies, and administering and reviewing the Stonnington Planning Scheme.

Planning schemes set the direction for the use, development and protection of land within the municipality.

Strategies and structure plans for activity centres, urban design frameworks and specific theme studies such as heritage and neighbourhood character, are prepared to support and underpin the strategic planning process.

Where we are

Stonnington has a number of world-class attractions, amenities and facilities including our recently-opened Stonnington Sports Centre fitted with new courts and pitches for indoor and outdoor sports including tennis, netball, wheelchair rugby, basketball, bowls, cricket and lacrosse.

There are also many gorgeous open spaces, parks and gardens, where residents can enjoy a range of sport, recreation and leisure activities.

Check out Prahran Square and our pocket parks too.

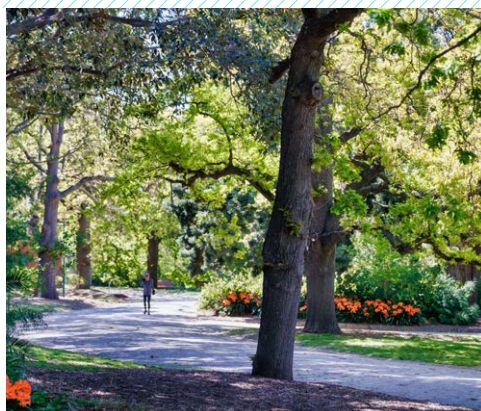
Take a walk or walk your dog at one of our 26 off-leash dog parks or jog, picnic, ride, relax, socialise or shop.

Stonnington service centres

- 1 **Stonnington City Centre**
311 Glenferrie Road, Malvern
- 2 **Stonnington Services and Visitor Hub**
Chatham Street, Prahran Square

Other key attractions

- 3 Chapel Off Chapel
- 4 Malvern Town Hall
- 5 Prahran Town Hall
- 6 Phoenix Park Community Centre
- 7 Malvern Tennis Centre, Armadale
- 8 Glendearg All Saints
Malvern Tennis Club
- 9 Malvern Valley Golf Course
- 10 TH King Pavilion and
Stonnington Environmental
Education Design Centre
- 11 Stonnington Sports Centre

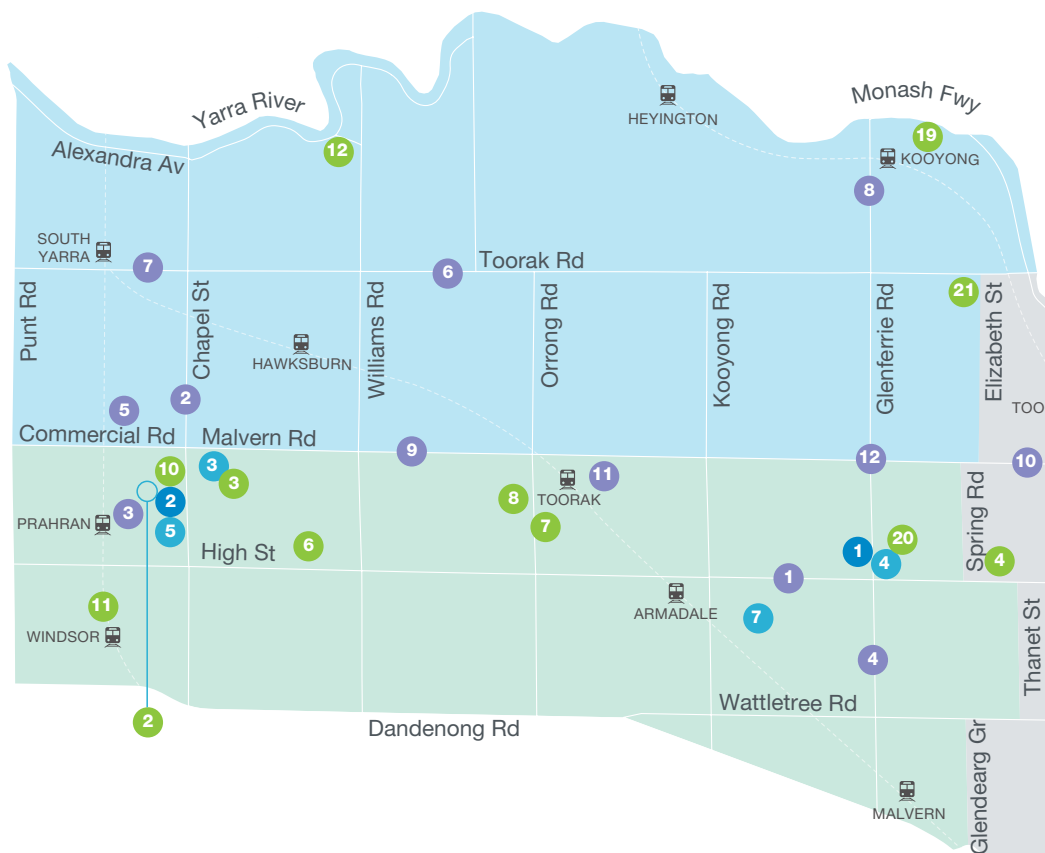


Parks, gardens, reserves and public spaces

- 1 Central Park
- 2 Grattan Gardens
- 3 Princes Gardens
- 4 Malvern Gardens
- 5 Gardiner Park
- 6 Victoria Gardens
- 7 Toorak Park and Victory Square
- 8 Orrong Romanis Reserve
- 9 Hedgeley Dene Gardens
- 10 Prahran Square
- 11 Windsor Siding
- 12 Como Park
- 13 Ardrie Park
- 14 Urban Forest Reserve
- 15 Waverley Oval
- 16 Phoenix Park
- 17 Stonnington Sports Centre at Percy Treyvaud Memorial Park
- 18 Glen Iris Wetlands
- 19 Sir Zelman Cowen Park
- 20 Malvern Cricket Ground
- 18 Sir Robert Menzies Reserve

Shopping centres and strips

- 1 High Street, Armadale
- 2 Chapel Street
- 3 Greville Street, Prahran
- 4 Glenferrie Road, Malvern
- 5 Prahran Market
- 6 Toorak Village
- 7 Toorak Road, South Yarra
- 8 Kooyong Village
- 9 Hawksburn Village
- 10 Malvern Village
- 11 Beatty Avenue, Armadale
- 12 Malvern Hill
- 13 Waverley Road
- 14 Central Park Village
- 15 Darling Village
- 16 Chadstone Shopping Centre



- North Ward
- South Ward
- East Ward





Our libraries, your community hub

The City of Stonnington hosts a range of library, information and history services.

Our four Stonnington libraries are hubs for community members to read, learn, study, work, create, connect and relax. Everyone is welcome and everyone belongs.

We have extensive print, physical and digital collections available to borrow and present a rich calendar of programs and events.

For more information or to join online, visit stonnington.vic.gov.au/Library.

You can also join in-person by visiting any of our libraries. To join you'll just need proof of your name and current address.

Stonnington History Centre

The Stonnington History Centre is an archive dedicated to preserving, interpreting and showcasing the history of Stonnington and former Cities of Malvern and Prahran.

We hold a significant collection of local and Council records, books, photographs, rate books, building plans, newspapers and other materials.

1257 High Street, Malvern
call **8290 1360** or visit
stonnington.vic.gov.au/history

Home Library Service

Council provides free delivery of library materials every three weeks to community members who are physically unable to visit our libraries due to age, disability or temporary illness or injury. Library staff will consult with you about your choice of materials, to suit your individual reading, listening and viewing interests.

To find out more, call **8290 8011** or email homelibrary@stonnington.vic.gov.au

Find your local library

- » **Malvern Library** 1255 High Street, Malvern or call **8290 1366**
- » **Phoenix Park Library**
30 Rob Roy Road, Malvern East or call **8290 4000**
- » **Prahran Library** 180 Greville Street, Prahran or call **8290 3344**
- » **Toorak/South Yarra Library**
340 Toorak Road, South Yarra or call **8290 8000**



A walk in the park

Stonnington is home to many beautiful parks, gardens and open spaces.

We're working hard to preserve and improve open space for our community, for the health and wellbeing of everyone, and for future generations to enjoy.

Here is a snapshot of some of our parks, gardens and open spaces you can explore:

» **Malvern Gardens**

Stonnington's oldest public garden with a pond featuring historic grotto and fountain.

» **Gardiner Park**

Popular grounds with barbeque, playground and shelter and featuring our first synthetic sportsfield.

» **Victoria Gardens**

Retains many of its original Victorian-style character including a sunken oval surrounded by plane trees.

» **Hedgeley Dene Gardens**

A linear garden layout situated among the leafy streets of Malvern East.

» **Central Park**

Covering almost eight hectares and with stunning avenue trees, conservatory and flowerbeds, Central Park has an oval for cricket and other team sports.

» **Grattan Gardens**

Barbecue, playground and historic rotunda.

» **Como Park**

Features a barbeque, playground and shelters.

» **Prahran Square**

Our exciting urban parkland.

Find your favourite quiet spot in nature, listen to the birds, relax with a book, enjoy a barbeque or picnic, go for a jog or join a team sport. You can also hire local parks or gardens for social, community, commercial or private events.

For information on an event or film permit in public spaces, **8290 1333**.

Let's keep active



Make a splash

We love our pools and you will too! Stonnington's two iconic leisure centres (both recently upgraded), are the perfect place to have a casual swim or lesson, participate in a group fitness class, access the hydrotherapy program or enjoy a spa or sauna.

- » **Harold Holt Swim Centre**
Corner Edgar and High Streets
Glen Iris
8290 1678
- » **Prahran Aquatic Centre**
Essex Street, Prahran
8290 7140

For information about opening hours, memberships, programs and classes, visit stonnington.vic.gov.au/active

Kick a fitness goal

Whether you'd rather jog, cycle, play netball, soccer, a round of golf or tennis, there's an activity in Stonnington to suit your interest and level of fitness.

Staying active and keeping fit are important priorities. Stonnington offers fantastic recreational opportunities for all members of the community, at all levels and abilities.

If you want to join a local sporting team, check out our directory of more than 60 sporting clubs at stonnington.vic.gov.au/active

Let's go shopping... and more

Stonnington is home to many fabulous retail locations — from small village shopping clusters like Hawksburn Village and Malvern East Village — to some of Melbourne's most iconic shopping destinations, such as Chapel Street, High Street, Armadale, Greville Street and Chadstone.

Five business associations operate in Stonnington to actively market and promote their retail precincts. The profile of green business is growing as we encourage local businesses to become more sustainable.

Shopping highlights

» Chapel Street

A world-class shopping, dining and entertainment precinct, you'll find great cafés, bars, restaurants and clubs, local designers, international brands and vintage treasures all on Chapel.

» High Street, Armadale

High Street is the fashionable and stylish home of cafés, restaurants, lifestyle and homewares stores, rug galleries, bridal boutiques and an array of local and international fashion labels.

» Toorak Road, South Yarra

Located between Punt Road and Chapel Street, and featuring more than one hundred shops, restaurants and cafés, this bustling strip also has all the latest in luxury shopping, fashion and fine food.

» Toorak Village

The place to go to experience that unique local atmosphere, designer boutiques, bespoke jewellers and an eclectic collection of sculptures, artwork, cafés, chocolatiers and food restaurants.

» Glenferrie Road, Malvern

More than 400 shops, cafés, restaurants and services make up this eclectic and vibrant shopping and family-friendly mecca. It's great for coffee catch-ups, groceries, lunch and dinner.

» Prahran Market

A true and established Stonnington icon, in the foodie heart of Prahran, stallholders have been serving up fresh delicious and nutritious produce, fine foods, fish, deli goods and market knowledge for more than a century.



Arts, culture, events and festivals

We recognise arts, culture and creativity are at the heart of the health, wellbeing and prosperity of our community.

Each year, Stonnington hosts a full and exciting program of free or low-cost arts and culture events. We invite our community to come along and experience all that's on offer throughout the year from small community events to hallmark cultural events, each of these has a special place on the Stonnington calendar.

Events and festivals

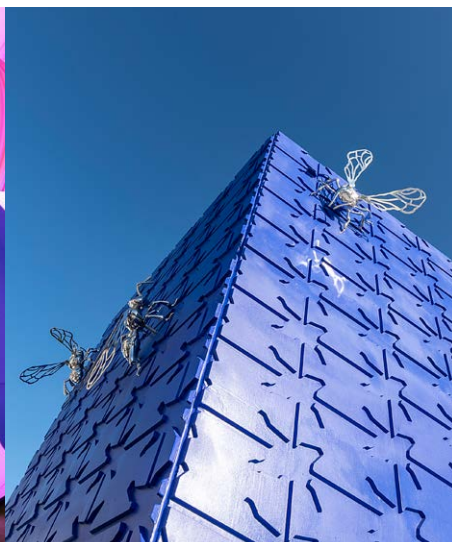
Each year, our team delivers an eclectic mixture of live performances, concerts and special interest festivals.

Highlights include Sunset Sounds, The Classics Concert series, Pets in the Park, Roola Boola Children's Arts Festival, Glow Winter Arts Festival, So Soiree and Christmas Carols.

Art and art galleries

We value highly creative opportunities that support local artists, galleries and art projects.





Public art collection

Helping celebrate our cultural identity, interpreting a significant place or event or giving us pride in our local environment, public art has a vital role to play in connecting our community with their environment. The City of Stonnington boasts an extensive public art collection.

Public Mural Wall Crawl

Stonnington is home to many murals dotted around our various precincts, adorning many of our walls and buildings and brightening our laneways.

Visit this free gallery by taking The Wall Crawl path and enjoy our most recent murals using the murals map at stonnington.vic.gov.au/Community/Arts-and-culture/Public-Mural-Wall-Crawl

Contemporary art collection

We have a modern art collection from the late 20th century to today. Our Art Acquisitions Advisory Committee recommends what we have in our collection. The collection is our commitment to enrich the cultural life of our community.

To view the entire Contemporary Art Collection, email

arts@stonnington.vic.gov.au

Visual art opportunities

We support and nurture emerging artists, established artists and street artists and offer opportunities to showcase works at events and in our public spaces. We also support artists through our annual arts and culture grants program.

Grants

To support local organisations to help provide services that help enrich our community, we provide annual grants opportunities.

Arts and culture grants

This program reflects the City of Stonnington's vision to be vibrant, imaginative and creative. Spanning a broad range of art forms and practices, this grant supports inclusive, innovative, engaging, empowering, resilient and environmentally friendly projects.

Arts and culture grants support local organisations and art-based initiatives that enhance the cultural, community and economic development of Stonnington.



Community grants

Community grants are open to eligible, not-for-profit/charitable organisations whose services, events and activities enrich the lives and meet the needs of our community.



Want to hire a venue?

We offer a range of Council venues and community facilities for private, celebratory and community events including meetings functions, birthdays, weddings, parties and just about anything. For more information, visit stonnington.vic.gov.au/Community/Venue-hire



Chapel Off Chapel



Chapel Off Chapel is our premier arts complex in the heart of Prahran.

Originally built in 1858 as a church, Chapel Off Chapel is one of Melbourne's most popular live performance venues.

Chapel Off Chapel presents new and established talent, hosting more than 450 performances and around 55,000 audience members each year.

Locals and visitors love the friendly staff, welcoming vibe, fully-licensed bar, foyer and courtyard, plus the excitement of getting up close and personal with the artists.

Want front row seats?

Make sure you follow our Chapel Off Chapel social media channels and subscribe to the What's On enewsletter for updates.

For events, programs and bookings, visit us at chapeloffchapel.com.au

On the streets – transport, traffic and parking

Stonnington offers excellent and extensive transport options including trains, trams and bus networks servicing the community.

Our streets are busy but we have dedicated bike lanes for cyclists and shared roads and paths for commuters, pedestrians and drivers, along with public transport. Stonnington is also easy to get around on foot and walking provides a great way to discover your local area.

What are Stonnington's priorities around traffic and transport?

We have a proactive approach to road safety, as we work towards reducing road-related fatalities and serious injuries in the area. We promote and support safe, accessible, convenient and sustainable public transport options, pedestrian links and cycling.



Am I entitled to a parking permit?

Residential parking permits are available for residents and visitors. Permits are only valid when the vehicle is parked as close as possible to the residence to which it was issued. Permits must always be displayed clearly. Each rateable residential property can have up to two residential parking permits unless restrictions apply.

How can I find out about current roadworks?

Roadworks around Stonnington occur for various reasons including major events, road repairs, upgrading and maintenance and building works.

For information on the latest travel and road conditions in the area, visit vicroads.vic.gov.au

On your bike

Each year, the City of Stonnington celebrates Ride2Work Day. With great bike trails and bike lanes placed right throughout our community, the event encourages residents to jump on a bike and get active on their way in to work and we invite residents to come along for the ride!

To see our Council's transport initiatives, visit our [Sustainable Transport](#) page.



A sustainable Stonnington

We are committed to creating a more sustainable future for all of us.

Our **Climate Emergency Action Plan (2021-2024)** outlines our pathway towards 2030 and a zero carbon and climate-ready future for our city.

We are also committed to reducing our own emissions, as well as helping to reduce community emissions and preparing and adapting our city for a changing climate.



One way we support our community, is through the delivery of environmental programs and events across a range of topics, including energy efficiency, sustainable gardening, biodiversity habitats, renewable energy, being water wise and environmental leadership.

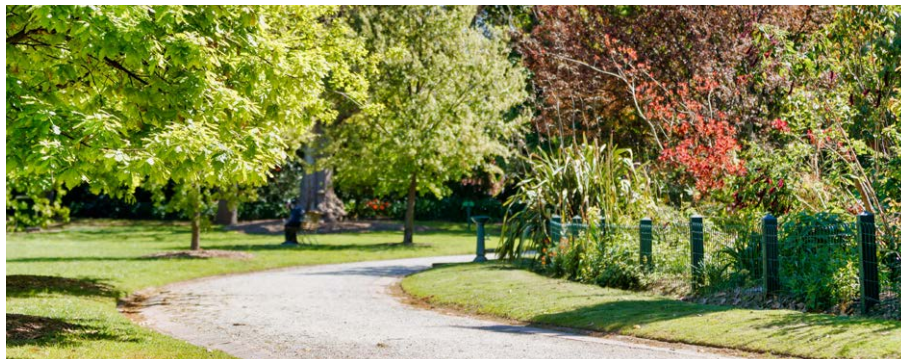
Here are some quick wins to live more sustainably:

- » seek trusted advice when installing solar
- » get water wise at home
- » join our My Smart Garden program
- » come along to one of our tree-planting events
- » experience our biodiversity at a local park
- » borrow seeds from the Stonnington Seed Library
- » provide shelter and food for local wildlife
- » get inspired at one of our environmental workshops
- » use one of our home energy kits available from our libraries.

We also work closely with educators from Stonnington's schools and early learning centres to support them to inspire the next generation of environmentalists.

Be the first to hear about local events and sustainability programs by subscribing to our Environment News at stonnington.vic.gov.au/Community/Sustainability

Open space for all



Stonnington has the second lowest amount of public open space per person in any Victorian Council.

Stonnington's open spaces provide benefits such as improving the health and wellbeing of everyone who works, lives or plays in Stonnington, supporting the City's biodiversity and mitigating the impacts of climate change.

We have a Public Realm Strategy that provides strategic direction for the provision, development, design and management of the public realm. The public realm is defined as all external spaces that are accessible to the public like includes parks, civic squares and streets.

One of the actions if this strategy was to prepare a land acquisition and conversion strategy to support increasing our open space opportunities in Stonnington known as Strategies for Creating Open Space. It's our long-term plan to increase public open space across our City and range of options including:

- » relocating car parks underground and creating open space above – such as Prahran Square
- » promoting and encouraging green roofs and walls
- » extending existing green spaces, and
- » exploring opportunities to provide new open spaces like pocket parks.

For updates, visit

stonnington.vic.gov.au/openspaces

Get to know your Council

Councillors

City of Stonnington has nine elected Councillors, three representing each of the city's three wards North Ward, South Ward and East Ward.

Meet your Councillor

Get to know your Councillors at a Meet your Councillor meeting. We host twice-yearly Meet your Councillor sessions, where you can drop in for a chat with your Ward Councillors to discuss issues and find out about things happening in your neighbourhood.

Council meetings

Council meetings are held in Malvern Town Hall and are open to the public. All meetings are livestreamed on our website stonnington.vic.gov.au/watch-council-live

Connect Stonnington

Share your thoughts and ideas on projects that matter to you. Connect with Stonnington, have your say and provide feedback on Council proposed projects, initiatives and programs by visiting connectstonnington.vic.gov.au

EAST WARD

Representing the communities of Glen Iris, Malvern and Malvern East



Cr Joe Gianfriddo Mayor

@ jgianfriddo@stonnington.vic.gov.au

📞 0455 357 355



Cr Jami Klisaris

@ jklisaris@stonnington.vic.gov.au

📞 0427 333 471



Cr Polly Morgan

@ pmorgan@stonnington.vic.gov.au

📞 0429 784 025

SOUTH WARD

Representing the communities of
Armadale, Malvern, Prahran and Windsor



Cr Mike Scott *Deputy Mayor*

@ mscott@stonnington.vic.gov.au

0428 289 683



Cr Nicki Batagol

@ nbatagol@stonnington.vic.gov.au

0437 655 926



Cr Melina Sehr

@ msehr@stonnington.vic.gov.au

0417 773 644

NORTH WARD

Representing the communities of
Kooyong, South Yarra and Toorak



Cr Marcia Griffin

@ mgriffin@stonnington.vic.gov.au

0429 239 413



Cr Kate Hely

@ khely@stonnington.vic.gov.au

0436 460 829



Cr Matthew Koce





@ mkoce@stonnington.vic.gov.au

0419 147 352



City of
STONNINGTON

Get social with us

-  StonningtonCityCouncil
-  StonningtonCity
-  StonningtonCityCouncil
-  company/city-of-stonnington

Hearing or speech impairment

We are a national relay service friendly organisation.
If you are deaf or have a hearing or speech impairment,
contact us through the National Relay Service (NRS):

- » **TTY** users call **133 677**, then ask for **8290 1333**
- » **Speak and listen** users, call **1300 555 727**, then ask for **8290 1333**
- » **Internet relay** users, connect to the NRS, then ask for **8290 1333**

Community languages

Call the Stonnington Community Link, a multilingual telephone information service.

Mandarin	普通話	9280 0730	Polish	Polski	9280 0734
Cantonese	廣東話	9280 0731	Russia	Русский	9280 0735
Greek	Ελληνικά	9280 0732	Indonesian	Bahasa Indonesia	9280 0737
Italian	Italiano	9280 0733	Vietnamese	Tiếng Việt	9280 0748
All other languages		9280 0736			

Stonnington City Centre

311 Glenferrie Road, Malvern

Stonnington Services and Visitor Hub

Chatham Street, Prahran Square

Stonnington Depot

293 Tooronga Road, Malvern

PO Box 58, Malvern Victoria 3144
council@stonnington.vic.gov.au

STONNINGTON.VIC.GOV.AU