

Primary School No 1604, 2B Spring Road, Malvern – Statement of Significance, June 2021

Heritage place: Primary School No 1604, 2B Spring Road, Malvern

PS ref no.: HO97



Figure 1. Primary School No. 1604 (GJM Heritage, July 2020)

What is significant?

Primary School No 1604, Spring Road, Malvern, comprising elements built from 1875 to 1924.

Elements that contribute to the significance of the place include (but are not limited to):

Whole Site

- The external form, materials and detailing of the buildings constructed from 1875 to 1924
- The high level of integrity to the original design of these components.
- Complex asymmetrical massing due to staged construction phases
- Gabled and hipped roofs
- Multi-paned windows.

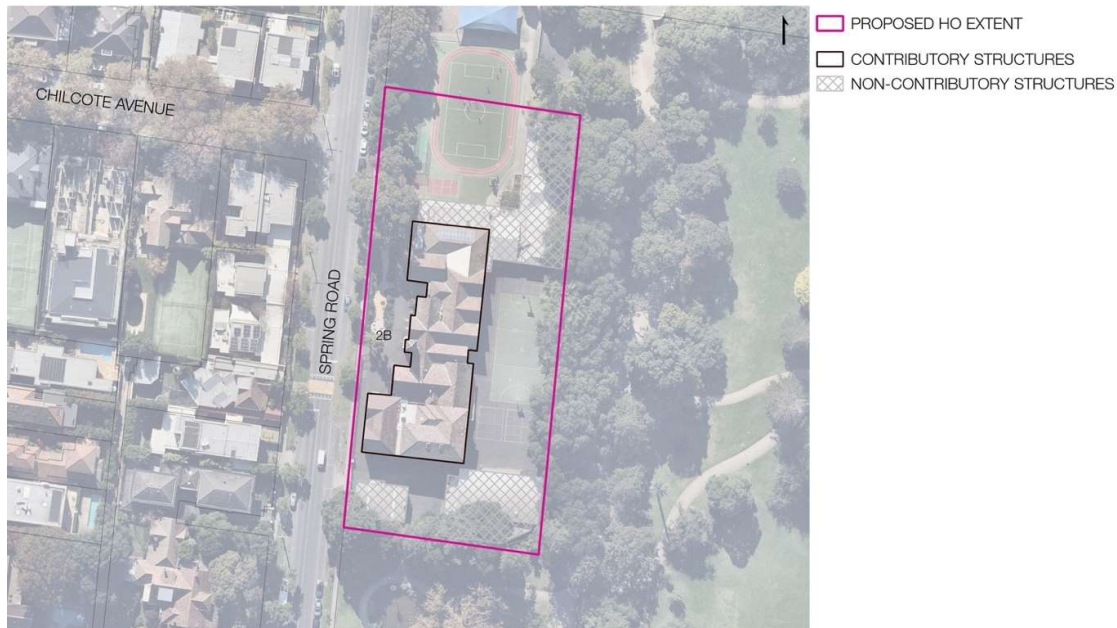
1875-1908 Buildings

- Polychromatic brick walls
- Bluestone base
- Arch-headed windows including segmental arches and semicircular arches with pointed arch voussoirs
- Jettied timber framing to gable ends
- Prominent buttressed tower with Gothic detailing, school name plate and steep slate-clad spire.

1923-1924 Buildings

- Red brick walls on brick base
- Rectangular windows
- Half-timbered gable ends.

Later alterations and additions are not significant. This includes the red brick building at the south-west corner of the main building, additions to the north east corner of the main building and two individual buildings at the south end of the school property.



How is it significant?

Primary School No 1604 is of local historical, representative (architectural) and aesthetic significance to the City of Stonnington.

Why is it significant?

Primary School No 1604 was the first State school constructed in Malvern and the building was progressively enlarged after its establishment in 1875 in response to the rapidly increasing numbers of children in the suburb. The school, comprising the small original building and the series of additions constructed in stages to 1924, clearly demonstrates the rapid population increase in Malvern from the late nineteenth century to the early twentieth century. The educational facility has strong and long-term associations with the local community in Stonnington (Criterion A).

Primary School No 1604 is a fine and highly intact representative example of a late nineteenth/early twentieth century school in suburban Melbourne. It displays typical characteristics of this place type including polychromatic and red brickwork, gabled roofs with half-timbered gable ends, multi-paned windows, arch-headed windows with pointed arch voussoirs and prominent tower with slate-clad spire (Criterion D).

Primary School No 1604 is the result of a series of additions made to the original 1875 building in the late nineteenth and early twentieth century. The resulting building complex, with strong asymmetrical composition, a picturesque roofline of gables, hips and tower with spire, polychromatic brickwork, Gothic detailing and half-timbered gable ends, presents a picturesque composition of late Victorian and Federation architectural styles (Criterion E).

Primary source:

Malvern Heritage Review, GJM Heritage (June 2021)